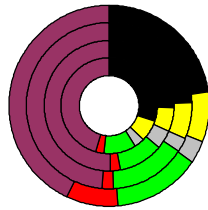


Wahlergebnisse:

Anteile an den gültigen Stimmen



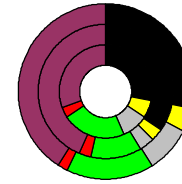
Bundestagswahlen:

1994, 1998, 2002, 2005

- CDU/CSU
- FDP
- Sonstige
- Grüne
- PDS
- SPD

Wahlbeteiligung
in %:

75,5
78,8
82,1
78,6



Europawahlen:

1994, 1999, 2004

- CDU/CSU
- FDP
- Sonstige
- Grüne
- PDS
- SPD

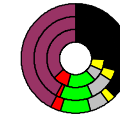
Wahlbeteiligung:
in %:

37,3
43,8
52,7

Landtagswahlen:

Wahlbeteiligung:
in %:

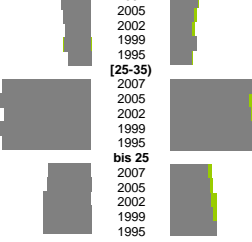
57,6 2007-05
61,3 2003-05
60,1 1999-06



	m	w
1,2%	1,2%	1,2%
1,1%	1,0%	1,0%
1,1%	0,9%	0,9%
1,1%	1,2%	1,2%
0,9%	0,9%	0,9%
3,7%	3,6%	3,6%
3,8%	3,4%	3,4%
3,6%	3,5%	3,5%
3,8%	3,7%	3,7%
3,7%	3,7%	3,7%
1,8%	1,6%	1,6%
1,8%	1,7%	1,7%
2,0%	1,7%	1,7%
2,0%	1,8%	1,8%
2,0%	2,0%	2,0%

Geburten

m - mit Alter über 35 der Frauen - w



	m	w
2007	14,5%	13,4%
2005	17,4%	15,1%
2002	17,0%	11,5%
1999	15,1%	11,8%
1995	18,0%	14,9%

	m	w
2007	5,3%	4,7%
2006	5,3%	4,7%
2004	6,2%	4,2%
2001	9,6%	6,7%
1998	11,5%	6,9%

Arbeitslose

2007

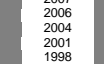


Altersverteilung

[55-65]



[25-55]



bis 25



Teilzeit

	m	w
2007	1,2%	13,9%
2006	1,0%	12,7%
2004	0,5%	8,4%
2001	0,5%	9,5%
1998	0,3%	8,1%

Schwerbehindert

	m	w
2007	2,6%	1,8%
2006	2,3%	1,6%
2004	2,3%	1,3%
2001	2,7%	1,6%
1998	2,7%	1,2%

Langzeitarbeitslos

	m	w
2007	24,0%	20,9%
2006	25,3%	18,4%
2004	28,0%	15,0%
2001	25,7%	15,9%
1998	26,7%	17,3%

Ausländer

	m	w
2007	11,7%	9,2%
2006	11,6%	8,1%
2004	12,8%	5,9%
2001	12,2%	6,0%
1998	11,4%	5,2%

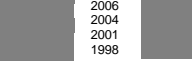
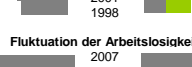
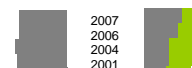
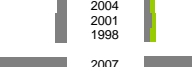
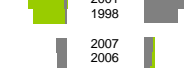
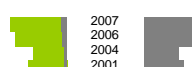
insgesamt

	m	w
2007	200,9%	188,6%
2006	179,2%	174,7%
2004	158,1%	182,0%
2001	168,7%	178,1%
1998	144,2%	147,3%

aus, in Erwerbstätigkeit

	m	w
2007	80,1%	58,8%
2006	75,2%	57,0%
2004	69,1%	71,4%
2001	71,8%	65,3%
1998	60,0%	52,7%

Besondere Teilesamtheiten



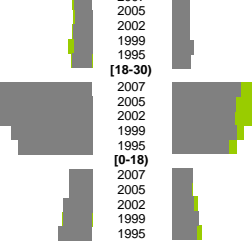
Wanderungen über die Kreisgrenzen

relativ zur Bevölkerung mit Alter über 30

	m	w
2007	42,7%	36,3%
2005	43,5%	34,5%
2002	49,7%	29,6%
1999	42,4%	28,8%
1995	41,6%	28,2%

Quoten m/w

mit Alter über 30



[18-30]

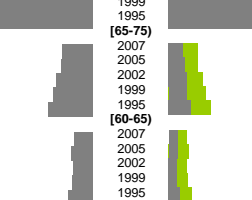


[0-18]



Sterbehäufigkeiten

m - zum Alter 75+ - w



[65-75]



[60-65]

Zuzüge

Fortzüge

	m	w
2007	2,6%	2,9%
2005	2,4%	2,8%
2002	2,8%	2,9%
1999	2,6%	3,5%
1995	2,8%	3,0%
13,5%	11,4%	11,4%
14,2%	10,6%	10,6%
15,2%	10,4%	10,4%
11,8%	10,7%	10,7%
10,8%	9,3%	9,3%
3,4%	3,4%	3,4%
3,3%	3,3%	3,3%
4,2%	3,5%	3,5%
4,2%	4,4%	4,4%
4,9%	4,0%	4,0%
133%	176%	176%
130%	177%	177%
124%	180%	180%
1	1	1
93%	208%	208%
93%	207%	207%
95%	209%	209%
1	1	1
102%	189%	189%
98%	192%	192%
100%	199%	199%
7,7%	7,0%	7,0%
7,9%	7,3%	7,3%
8,8%	7,3%	7,3%
9,7%	7,5%	7,5%
10,6%	7,9%	7,9%
2,6%	1,3%	1,3%
2,6%	1,3%	1,3%
3,0%	1,6%	1,6%
3,3%	1,5%	1,5%
3,7%	1,9%	1,9%
1,5%	0,7%	0,7%
1,7%	0,7%	0,7%
1,6%	0,7%	0,7%
1,7%	0,7%	0,7%
2,0%	1,0%	1,0%

Zuzüge

Fortzüge

	m	w
2007	43,904	42,447
2005	43,809	42,311
2002	46,744	44,141
1999	53,166	48,692
1995	62,126	55,760
2007	38,133	39,030
2005	38,039	38,984
2002	36,124	36,735
1999	34,475	34,721
1995	37,054	35,841
2007	26,866	25,360
2005	27,784	26,084
2002	28,786	27,001
1999	28,904	27,397
1995	28,357	27,423
2007	16,559	15,392
2005	16,887	15,896
2002	17,991	17,014
1999	18,730	17,764
1995	19,743	18,766

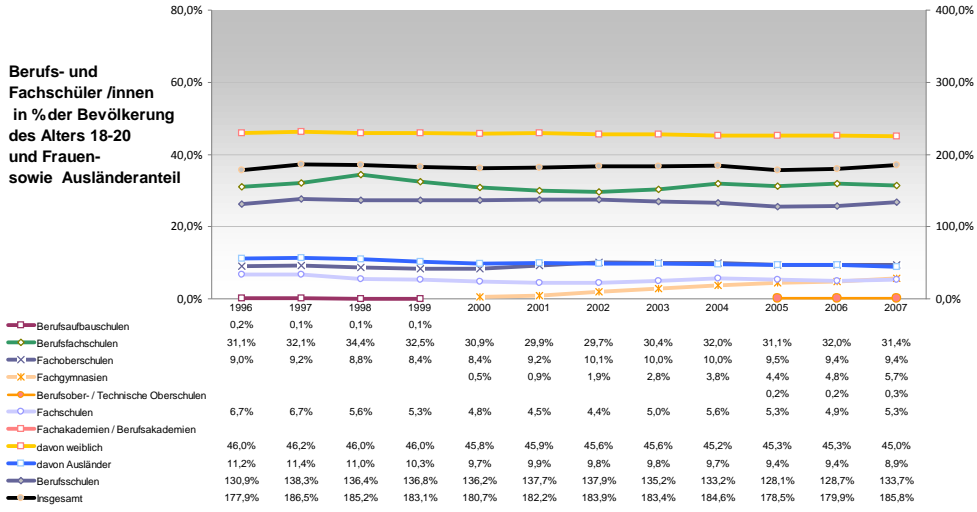
2007

	m	w
4,762	12,567	12,567
4,492	12,143	12,143
4,166	11,403	11,403
3,889	10,678	10,678
3,867	10,560	10,560
20,850	40,290	40,290
20,186	40,465	40,465
18,247	40,160	40,160
17,028	39,635	39,635
16,270	37,912	37,912
36,532	42,183	42,183
34,211	40,592	40,592
30,269	37,657	37,657
26,866	36,179	36,179
26,183	39,874	39,874
39,101	40,437	40,437
40,357	41,211	41,211
43,331	43,833	43,833
46,363	47,196	47,196
43,253	45,285	45,285
46,558	47,224	47,224
44,922	45,993	45,993
43,909	44,775	44,775
42,559	42,610	42,610
45,560	44,037	44,037
53,401	48,815	48,815
55,283	50,453	50,453
54,539	50,842	50,842
51,339	49,441	49,441
48,777	47,536	47,536
43,904	42,447	42,447
43,809	42,311	42,311
46,744	44,141	44,141
53,166	48,692	48,692
62,126	55,760	55,760
38,133	39,030	39,030
38,039	38,984	38,984
36,124	36,735	36,735
34,475	34,721	34,721
37,054	35,841	35,841
26,866	25,360	25,360
27,784	26,084	26,084
28,786	27,001	27,001
28,904	27,397	27,397
28,357	27,423	27,423
16,559	15,392	15,392
16,887	15,896	15,896
17,991	17,014	17,014
18,730	17,764	17,764
19,743	18,766	18,766

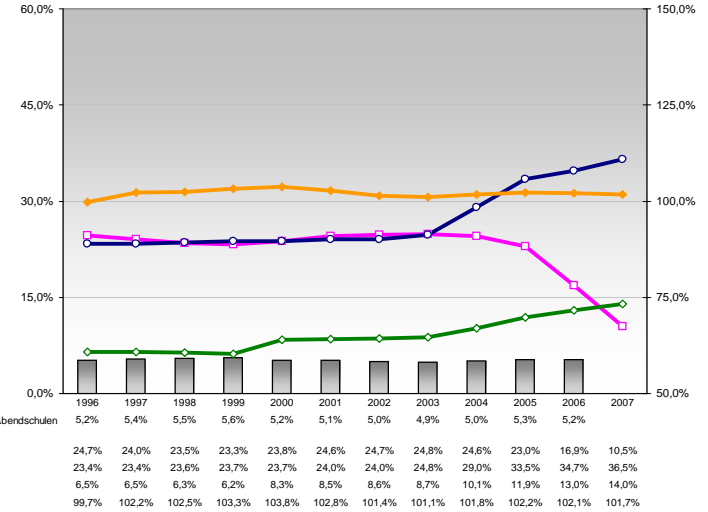
2005

	m	w
4,492	12,143	12,143
4,166	11,403	11,403
3,889	10,678	10,678
3,867	10,560	10,560
20,186	40,465	40,465
18,247	40,160	40,160
17,028	39,635	39,635
16,270	37,912	37,912
36,532	42,183	42,183
34,211	40,592	40,592
30,269	37,657	37,657
26,866	36,179	36,179
26,183	39,874	39,874
39,101	40,437	40,437
40,357	41,211	41,211
43,331	43,833	43,833
46,363	47,196	47,196
43,253	45,285	45,285
46,558	47,224	47,224
44,922	45,993	45,993
43,909	44,775	44,775
42,559	42,610	42,610
45,560	44,037	44,037
53,401	48,815	48,815
55,283	50,453	50,453
54,539	50,842	50,842
51,339	49,441	49,441
48,777	47,536	47,536
43,904	42,447	42,447
43,809	42,311	42,311
46,744	44,141	44,141
53,166	48,692	48,692
62,1		

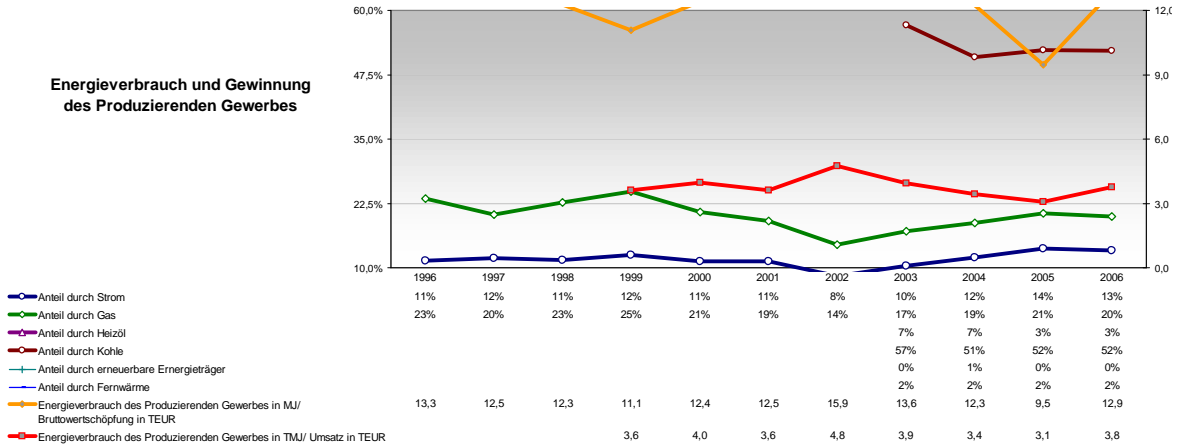
Berufs- und Fachschüler/innen in % der Bevölkerung des Alters 18-20 und Frauen- sowie Ausländeranteil



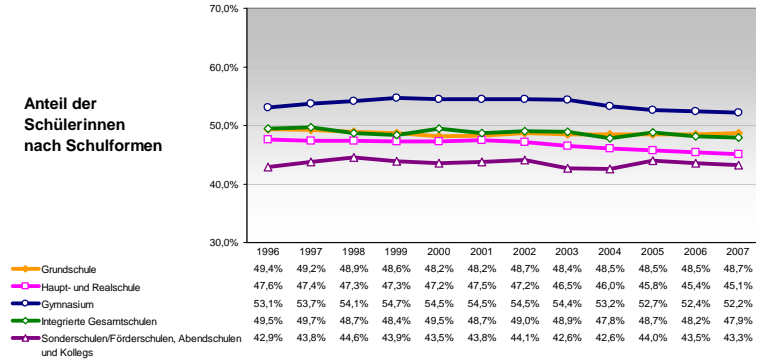
Schüler/innen nach Schulformen relativ zur Bevölkerung der Altersgruppe



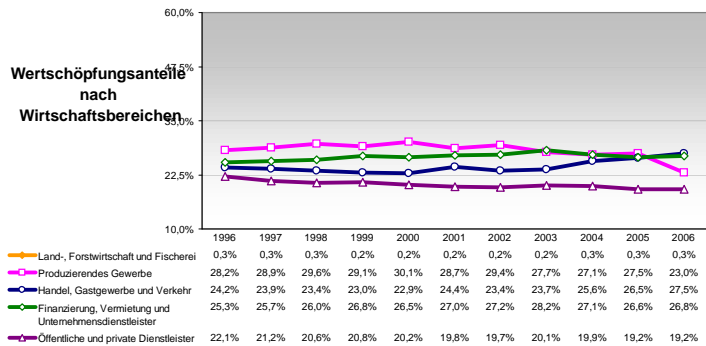
Energieverbrauch und Gewinnung des Produzierenden Gewerbes



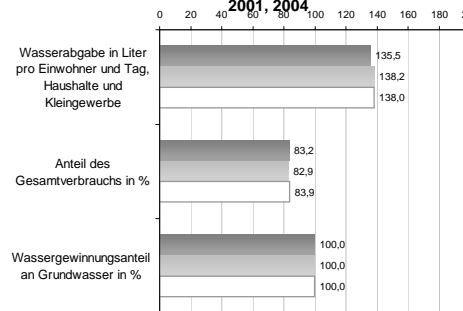
Anteil der Schülerinnen nach Schulformen



Wertschöpfungsanteile nach Wirtschaftsbereichen



Wasserabgabe und Wassergewinnung 1998, 2001, 2004



Anteil der Ausländer/innen nach Schulformen

