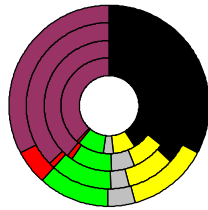


Wahlergebnisse:

Anteile an den gültigen Stimmen

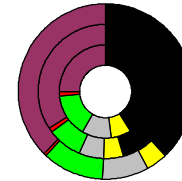


Bundestagswahlen: 1994, 1998, 2002, 2005

- CDU/CSU
- FDP
- Sonstige
- Grüne
- PDS
- SPD

Wahlbeteiligung
in %:

76,4
78,6
81,5
80,4



Europawahlen: 1994, 1999, 2004

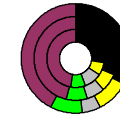
- CDU/CSU
- FDP
- Sonstige
- Grüne
- PDS
- SPD

Wahlbeteiligung:
in %:

53,2
57,2
72,8

Landtagswahlen: Wahlbeteiligung: in %:

56,8 2006-03
60,5 2001-03
69,7 1996-03



Landau in der Pfalz, Kreisfreie Stadt Wert 2007

Fläche in km² 83,0
Flächenanteil in % 0,23

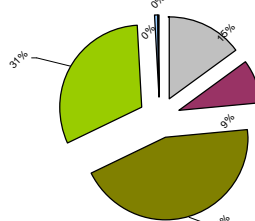
Bevölkerung 43.063
Bevölkerungsanteil in % 0,52
Ausländerquote 7,2%

Bevölkerungsdichte (Einwohner pro km²) 51,9

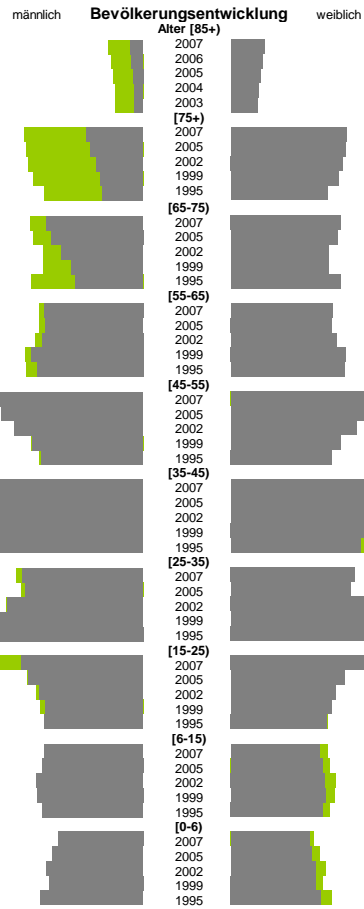


Bodennutzung 2004

- Siedlung und Gewerbe
- Verkehr
- Landwirtschaft
- Wald
- Wasser
- Rest

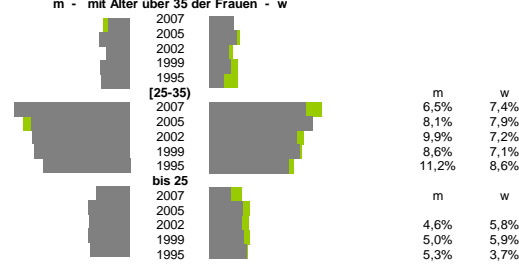


| m | w |
|--------|--------|
| 20.450 | 22.613 |
| 259 | 738 |
| 235 | 683 |
| 209 | 640 |
| 183 | 594 |
| 173 | 581 |
| 1.204 | 2.541 |
| 1.122 | 2.517 |
| 994 | 2.456 |
| 913 | 2.358 |
| 868 | 2.114 |
| 2.077 | 2.419 |
| 1.973 | 2.350 |
| 1.742 | 2.139 |
| 1.538 | 2.143 |
| 1.456 | 2.407 |
| 2.126 | 2.228 |
| 2.105 | 2.220 |
| 2.172 | 2.319 |
| 2.399 | 2.529 |
| 2.281 | 2.498 |
| 3.237 | 3.195 |
| 3.044 | 2.936 |
| 2.760 | 2.749 |
| 2.378 | 2.403 |
| 2.187 | 2.218 |
| 3.609 | 3.644 |
| 3.844 | 3.808 |
| 3.757 | 3.695 |
| 3.494 | 3.317 |
| 3.068 | 2.842 |
| 2.579 | 2.725 |
| 2.531 | 2.630 |
| 2.909 | 2.923 |
| 3.449 | 3.353 |
| 3.703 | 3.720 |
| 2.616 | 3.078 |
| 2.466 | 2.492 |
| 2.222 | 2.292 |
| 2.082 | 2.208 |
| 2.113 | 2.106 |
| 1.907 | 1.751 |
| 1.951 | 1.806 |
| 2.060 | 1.854 |
| 2.048 | 1.869 |
| 1.938 | 1.819 |
| 1.095 | 1.032 |
| 1.171 | 1.062 |
| 1.243 | 1.110 |
| 1.213 | 1.116 |
| 1.322 | 1.182 |

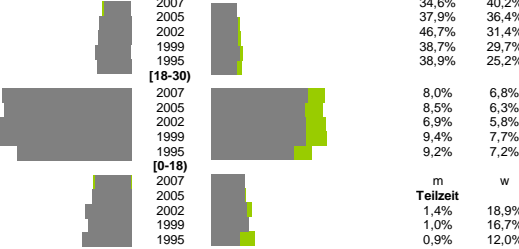


| m | w |
|--------|----------|
| 0,9% | 1,0% |
| 1,2% | 1,1% |
| 0,9% | 0,8% |
| 1,1% | 0,8% |
| 1,1% | 0,6% |
| 4,6% | 3,9% |
| 3,9% | 4,2% |
| 3,9% | 3,6% |
| 3,8% | 3,7% |
| 3,5% | 3,3% |
| 1,3% | 0,9% |
| 1,6% | 1,4% |
| 1,6% | 1,3% |
| 1,6% | 1,4% |
| 1,6% | 1,5% |
| Zuzüge | Fortzüge |
| 3,7% | 3,9% |
| 4,4% | 4,1% |
| 4,6% | 4,1% |
| 4,9% | 4,4% |
| 4,7% | 4,0% |
| 17,9% | 15,3% |
| 17,7% | 14,8% |
| 18,1% | 14,9% |
| 18,4% | 15,0% |
| 15,9% | 13,0% |
| 4,9% | 5,2% |
| 5,4% | 5,2% |
| 6,3% | 5,5% |
| 6,0% | 5,8% |
| 6,8% | 4,5% |
| Zuzüge | Fortzüge |
| 109% | 183% |
| 121% | 172% |
| 123% | 169% |
| 1 | 1 |
| 62% | 258% |
| 69% | 229% |
| 85% | 227% |
| 1 | 1 |
| 91% | 182% |
| 131% | 202% |
| 164% | 162% |
| m | w |
| 8,4% | 7,2% |
| 10,0% | 7,4% |
| 8,1% | 7,7% |
| 10,5% | 8,3% |
| 9,0% | 8,9% |
| 2,7% | 1,2% |
| 2,9% | 1,5% |
| 3,3% | 1,8% |
| 3,5% | 1,0% |
| 3,4% | 1,5% |
| 0,9% | 0,4% |
| 1,0% | 1,1% |
| 0,9% | 0,7% |
| 1,3% | 0,8% |
| 1,6% | 1,1% |

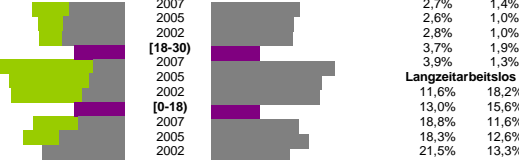
Geburten m - mit Alter über 35 der Frauen - w



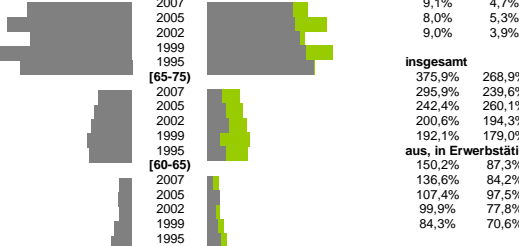
Wanderungen über die Kreisgrenzen relativ zur Bevölkerung mit Alter über 30



Quoten m/w mit Alter über 30



Sterbehäufigkeiten m - zum Alter 75+ - w

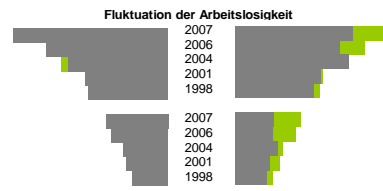
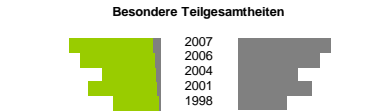
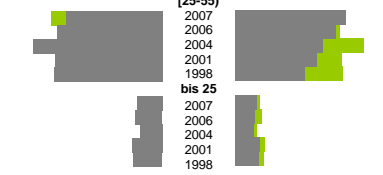
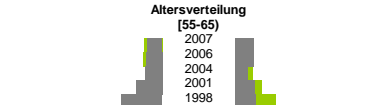
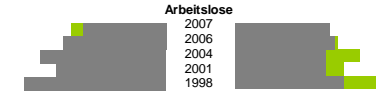


| m | w |
|-------|-------|
| 6,5% | 7,4% |
| 8,1% | 7,9% |
| 9,9% | 7,2% |
| 8,6% | 7,1% |
| 11,2% | 8,6% |
| 4,6% | 5,8% |
| 5,0% | 5,9% |
| 5,3% | 3,7% |
| 8,3% | 6,1% |
| 13,0% | 6,5% |
| 34,6% | 40,2% |
| 37,9% | 36,4% |
| 46,7% | 31,4% |
| 38,7% | 29,7% |
| 38,9% | 25,2% |
| 8,0% | 6,8% |
| 8,5% | 6,3% |
| 6,9% | 5,8% |
| 9,4% | 7,7% |
| 9,2% | 7,2% |

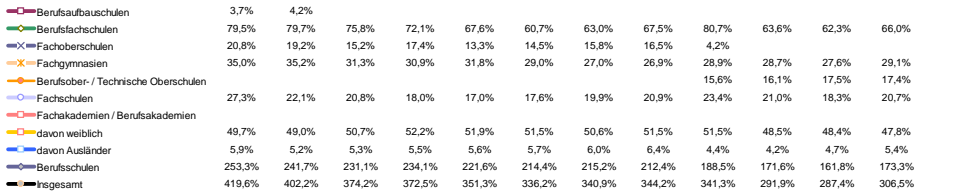
| m | w |
|-------|-------|
| 1,4% | 18,9% |
| 1,0% | 16,7% |
| 0,9% | 12,0% |
| 0,6% | 14,9% |
| 0,3% | 9,7% |
| 2,7% | 1,4% |
| 2,6% | 1,0% |
| 2,8% | 1,0% |
| 3,7% | 1,9% |
| 3,9% | 1,3% |
| 11,6% | 18,2% |
| 13,0% | 15,6% |
| 18,8% | 11,6% |
| 18,3% | 12,6% |
| 21,5% | 13,3% |
| 7,4% | 8,1% |
| 7,9% | 6,3% |
| 9,1% | 4,7% |
| 8,0% | 5,3% |
| 9,0% | 3,9% |

| Teilzeit | m | w |
|----------|-------|------|
| 1,4% | 18,9% | 2007 |
| 1,0% | 16,7% | 2006 |
| 0,9% | 12,0% | 2004 |
| 0,6% | 14,9% | 2001 |
| 0,3% | 9,7% | 1998 |
| 2,7% | 1,4% | 2007 |
| 2,6% | 1,0% | 2006 |
| 2,8% | 1,0% | 2004 |
| 3,7% | 1,9% | 2001 |
| 3,9% | 1,3% | 1998 |
| 11,6% | 18,2% | 2007 |
| 13,0% | 15,6% | 2006 |
| 18,8% | 11,6% | 2004 |
| 18,3% | 12,6% | 2001 |
| 21,5% | 13,3% | 1998 |
| 7,4% | 8,1% | 2007 |
| 7,9% | 6,3% | 2006 |
| 9,1% | 4,7% | 2004 |
| 8,0% | 5,3% | 2001 |
| 9,0% | 3,9% | 1998 |

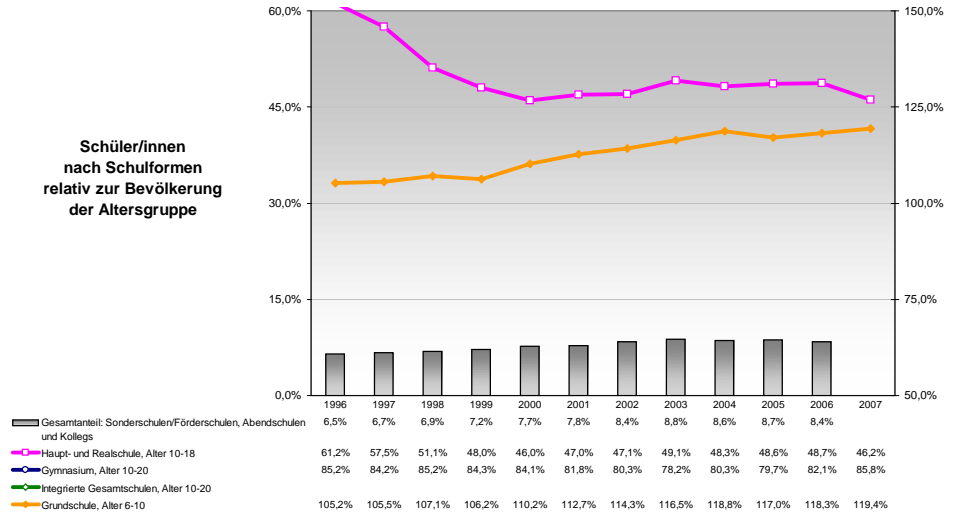
| insgesamt | m | w |
|-----------|--------|------|
| 375,9% | 268,9% | 2007 |
| 295,9% | 239,6% | 2006 |
| 242,4% | 260,1% | 2004 |
| 200,6% | 194,3% | 2001 |
| 192,1% | 179,0% | 1998 |
| 150,2% | 87,3% | 2007 |
| 136,6% | 84,2% | 2006 |
| 107,4% | 97,5% | 2004 |
| 99,9% | 77,8% | 2001 |
| 84,3% | 70,6% | 1998 |



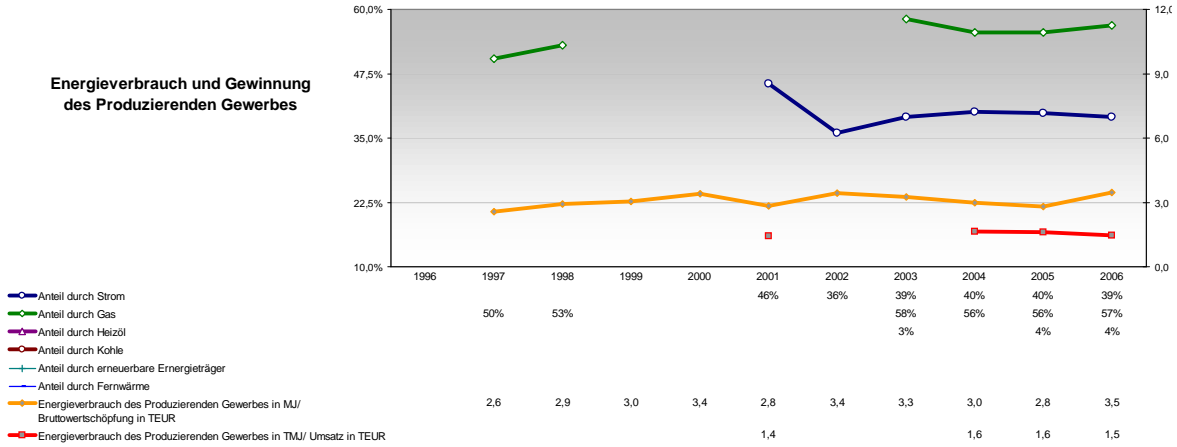
Berufs- und Fachschüler/innen in % der Bevölkerung des Alters 18-20 und Frauen- sowie Ausländeranteil



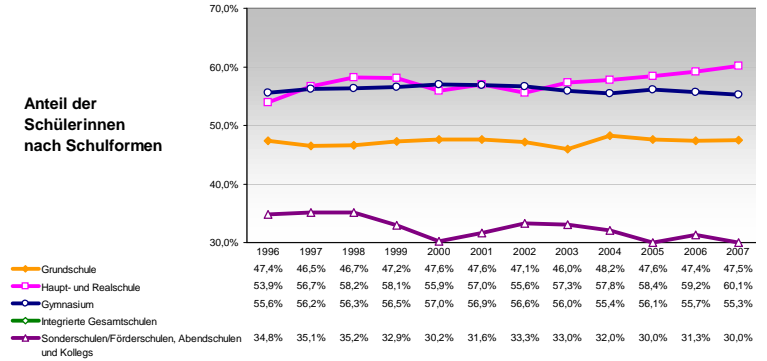
Schüler/innen nach Schulformen relativ zur Bevölkerung der Altersgruppe



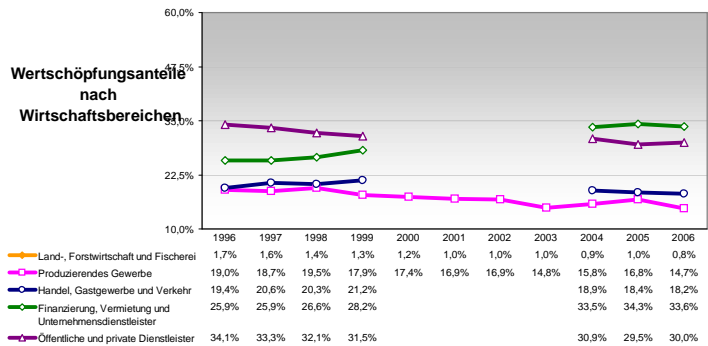
Energieverbrauch und Gewinnung des Produzierenden Gewerbes



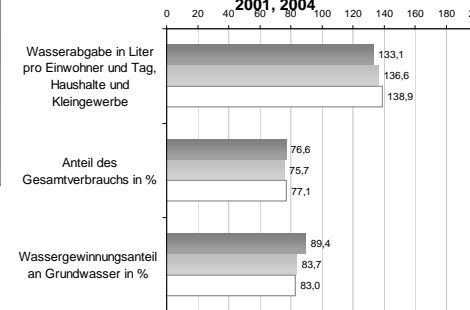
Anteil der Schülerinnen nach Schulformen



Wertschöpfungsanteile nach Wirtschaftsbereichen



Wasserabgabe und Wassergewinnung, 2001, 2004



Anteil der Ausländer/innen nach Schulformen

