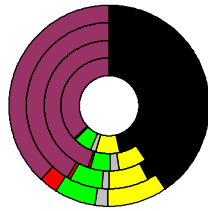


Wahlergebnisse:

Anteile an den gültigen Stimmen

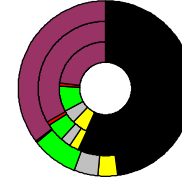


Bundestagswahlen: 1994, 1998, 2002, 2005

- CDU/CSU
- FDP
- Sonstige
- Grüne
- PDS
- SPD

Wahlbeteiligung
in %:

80,7
82,6
85,7
84,0



Europawahlen: 1994, 1999, 2004

- CDU/CSU
- FDP
- Sonstige
- Grüne
- PDS
- SPD

Wahlbeteiligung:
in %:

45,2
49,3
57,3

Landtagswahlen: Wahlbeteiligung: in %:

60,3 2008-01
70,1 2003-02
76,1 1998-03



Osnabrück, Landkreis

Fläche in km²
Flächenanteil in %

Bevölkerung
Bevölkerungsanteil in %
Ausländerquote

Bevölkerungsdichte (Einwohner pro km²)

Wert 2007

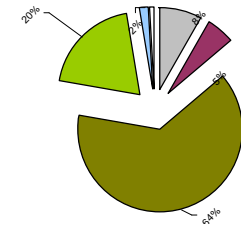
2.121,6
5,94

358.852
4,36
5,0%

16,9

Bodennutzung 2004

- Siedlung und Gewerbe
- Verkehr
- Landwirtschaft
- Wald
- Wasser
- Rest



m 178.960
w 179.892

Bevölkerungsentwicklung

männlich weiblich

Alter (85+)	2007	2006	2005	2004	2003	2002	2001	1999	1995
1.816	5.243	1.639	5.022	1.474	4.730	1.364	4.525	1.311	4.410
10.519	18.462	9.630	17.935	7.583	15.746	6.346	15.028	5.655	13.673
18.376	19.608	17.696	19.091	15.257	16.835	13.758	15.727	12.171	16.199
19.013	18.190	18.527	18.001	18.797	18.806	20.481	20.557	20.087	20.118
28.142	26.442	26.571	24.697	24.159	21.965	21.057	19.068	19.118	18.054
29.641	28.921	31.066	30.151	31.513	30.207	29.685	27.993	26.293	24.291
19.388	18.697	20.386	19.777	23.343	22.479	26.831	25.988	29.842	28.505
23.023	20.622	22.766	20.509	22.855	20.830	21.762	20.208	21.652	20.489
20.295	18.816	20.839	19.448	21.676	20.361	22.141	20.676	20.799	19.388
10.563	10.134	11.411	10.948	12.642	11.819	13.208	12.524	13.658	12.816

Alter (75+)

2007	2006	2005	2002	1999	1995
18.462	17.935	15.746	15.028	13.673	12.199
19.608	19.091	16.835	15.727	16.199	14.118
18.190	18.001	18.806	20.557	20.118	18.054
26.442	24.697	21.965	19.068	18.054	16.199
28.921	30.151	30.207	27.993	24.291	20.489
18.697	19.777	22.479	25.988	28.505	20.622
20.386	19.448	20.361	20.676	19.388	10.134
23.343	22.479	25.988	28.505	20.622	10.948
26.831	25.988	20.676	19.388	10.134	11.819
29.842	28.505	20.622	10.948	11.819	12.524
19.388	18.697	20.386	19.777	23.343	22.479
20.386	19.777	23.343	22.479	26.831	25.988
23.343	22.479	26.831	25.988	29.842	28.505
26.831	25.988	29.842	28.505	20.622	10.948
29.842	28.505	20.622	10.948	11.819	12.524

Alter (65-75)

2007	2006	2005	2002	1999	1995
18.462	17.935	15.746	15.028	13.673	12.199
19.608	19.091	16.835	15.727	16.199	14.118
18.190	18.001	18.806	20.557	20.118	18.054
26.442	24.697	21.965	19.068	18.054	16.199
28.921	30.151	30.207	27.993	24.291	20.489
18.697	19.777	22.479	25.988	28.505	20.622
20.386	19.448	20.361	20.676	19.388	10.134
23.343	22.479	25.988	28.505	20.622	10.948
26.831	25.988	20.676	19.388	10.134	11.819
29.842	28.505	20.622	10.948	11.819	12.524

Alter (55-65)

2007	2006	2005	2002	1999	1995
18.462	17.935	15.746	15.028	13.673	12.199
19.608	19.091	16.835	15.727	16.199	14.118
18.190	18.001	18.806	20.557	20.118	18.054
26.442	24.697	21.965	19.068	18.054	16.199
28.921	30.151	30.207	27.993	24.291	20.489
18.697	19.777	22.479	25.988	28.505	20.622
20.386	19.448	20.361	20.676	19.388	10.134
23.343	22.479	25.988	28.505	20.622	10.948
26.831	25.988	20.676	19.388	10.134	11.819
29.842	28.505	20.622	10.948	11.819	12.524

Alter (45-55)

2007	2006	2005	2002	1999	1995
18.462	17.935	15.746	15.028	13.673	12.199
19.608	19.091	16.835	15.727	16.199	14.118
18.190	18.001	18.806	20.557	20.118	18.054
26.442	24.697	21.965	19.068	18.054	16.199
28.921	30.151	30.207	27.993	24.291	20.489
18.697	19.777	22.479	25.988	28.505	20.622
20.386	19.448	20.361	20.676	19.388	10.134
23.343	22.479	25.988	28.505	20.622	10.948
26.831	25.988	20.676	19.388	10.134	11.819
29.842	28.505	20.622	10.948	11.819	12.524

Alter (35-45)

2007	2006	2005	2002	1999	1995
18.462	17.935	15.746	15.028	13.673	12.199
19.608	19.091	16.835	15.727	16.199	14.118
18.190	18.001	18.806	20.557	20.118	18.054
26.442	24.697	21.965	19.068	18.054	16.199
28.921	30.151	30.207	27.993	24.291	20.489
18.697	19.777	22.479	25.988	28.505	20.622
20.386	19.448	20.361	20.676	19.388	10.134
23.343	22.479	25.988	28.505	20.622	10.948
26.831	25.988	20.676	19.388	10.134	11.819
29.842	28.505	20.622	10.948	11.819	12.524

Alter (25-35)

2007	2006	2005	2002	1999	1995
18.462	17.935	15.746	15.028	13.673	12.199
19.608	19.091	16.835	15.727	16.199	14.118
18.190	18.001	18.806	20.557	20.118	18.054
26.442	24.697	21.965	19.068	18.054	16.199
28.921	30.151	30.207	27.993	24.291	20.489
18.697	19.777	22.479	25.988	28.505	20.622
20.386	19.448	20.361	20.676	19.388	10.134
23.343	22.479	25.988	28.505	20.622	10.948
26.831	25.988	20.676	19.388	10.134	11.819
29.842	28.505	20.622	10.948	11.819	12.524

Alter (15-25)

2007	2006	2005	2002	1999	1995
18.462	17.935	15.746	15.028	13.673	12.199
19.608	19.091	16.835	15.727	16.199	14.118
18.190	18.001	18.806	20.557	20.118	18.054
26.442	24.697	21.965	19.068	18.054	16.199
28.921	30.151	30.207	27.993	24.291	20.489
18.697	19.777	22.479	25.988	28.505	20.622
20.386	19.448	20.361	20.676	19.388	10.134
23.343	22.479	25.988	28.505	20.622	10.948
26.831	25.988	20.676	19.388	10.134	11.819
29.842	28.505	20.622	10.948	11.819	12.524

Alter (6-15)

2007	2006	2005	2002	1999	1995
18.462	17.935	15.746	15.028	13.673	12.199
19.608	19.091	16.835	15.727	16.199	14.118
18.190	18.001	18.806	20.557	20.118	18.054
26.442	24.697	21.965	19.068	18.054	16.199
28.921	30.151	30.207	27.993	24.291	20.489
18.697	19.777	22.479	25.988	28.505	20.622
20.386	19.448	20.361	20.676	19.388	10.134
23.343	22.479	25.988	28.505	20.622	10.948
26.831	25.988	20.676	19.388	10.134	11.819
29.842	28.505	20.622	10.948	11.819	12.524

Alter (0-6)

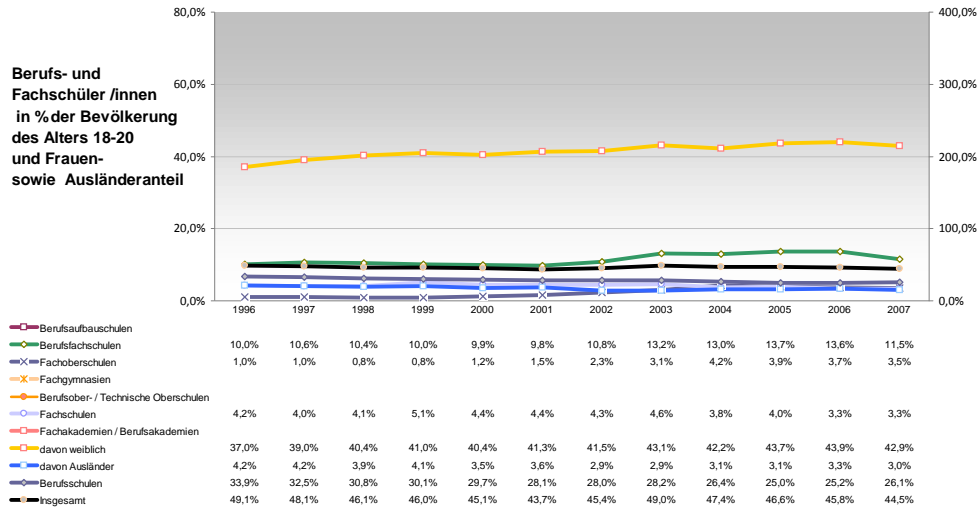
2007	2006	2005	2002	1999	1995
18.462	17.935	15.746	15.028	13.673	12.199
19.608	19.091	16.835	15.727	16.199	14.118
18.190	18.001	18.806	20.557	20.118	18.054
26.442	24.697	21.965	19.068	18.054	16.199
28.921	30.151	30.207	27.993	24.291	20.489
18.697	19.777	22.479	25.988	28.505	20.622
20.386	19.448	20.361	20.676	19.388	10.134
23.343	22.479	25.988	28.505	20.622	10.948
26.831	25.988	20.676	19.388	10.134	11.819
29.842	28.505	20.622	10.948	11.819	12.524

m	w
1,1%	1,1%
1,2%	1,0%
1,1%	1,1%
1,2%	1,1%
1,1%	0,9%
5,1%	4,9%
5,3%	5,1%
5,0%	4,9%
5,7%	5,2%
5,0%	4,7%
1,4%	1,2%
1,5%	1,5%
1,7%	1,6%
1,6%	1,5%
1,6%	1,5%

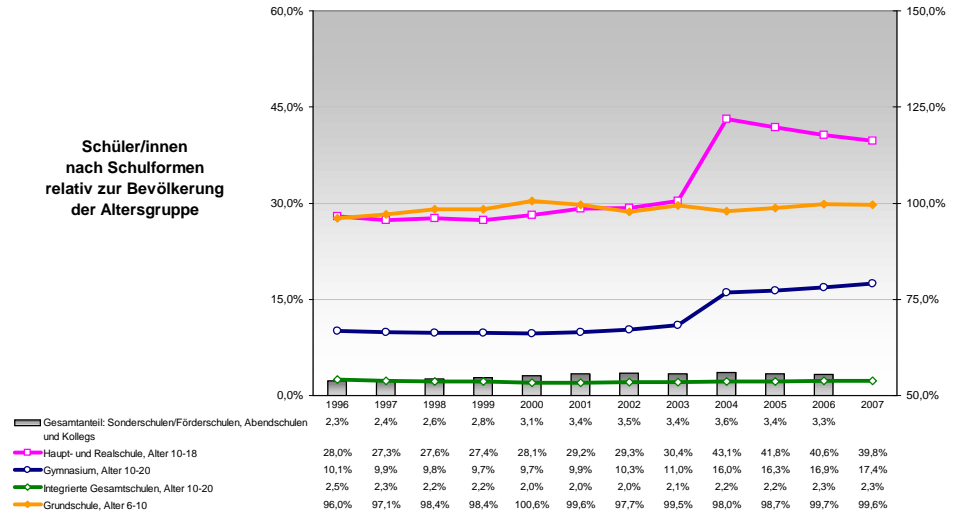
Zuzüge Fortzüge

Zuzüge	Fortzüge
2,3%	2,1%
2,5%	2,2%
3,2%	3,0%
9,0%	8,4%
13,1%	11,6%
8,0%	9,9%
8,6%	10,4%
10,0%	10,5%
19,6%	19,9%
21,2%	19,5%
2,5%	2,2%
2,5%	2,3%
3,3%	3,3%
13,8%	12,8%
22,6%	18,9%
Zuzüge	Fortzüge
124%	177%
133%	172%
118%	186%
1	1
99%	205%
102%	199%
103%	201%
1	1
109%	194%
103%	201%
108%	196%
m	w
7,8%	7,5%
8,2%	7,6%
8,7%	8,1%
10,2%	8,1%
12,6%	9,1%

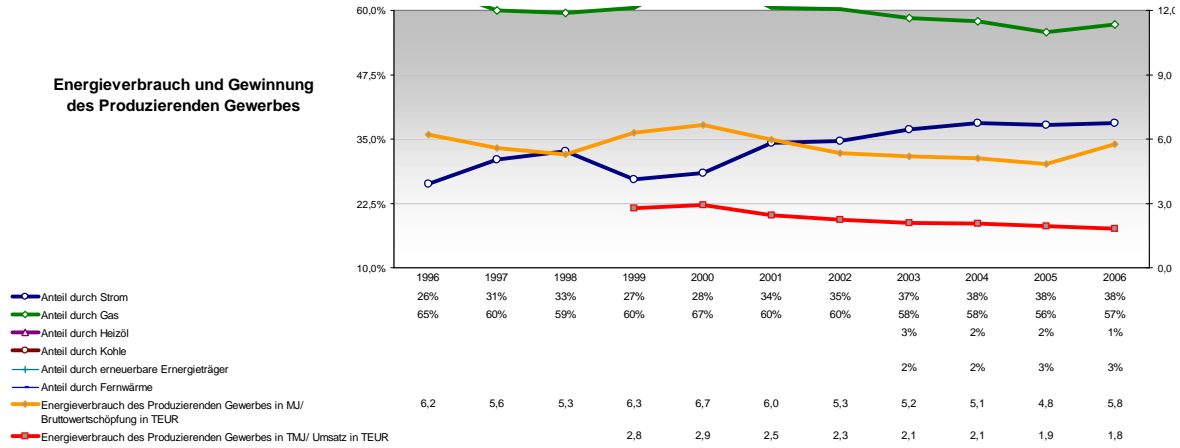
Berufs- und Fachschüler/innen in % der Bevölkerung des Alters 18-20 und Frauen- sowie Ausländeranteil



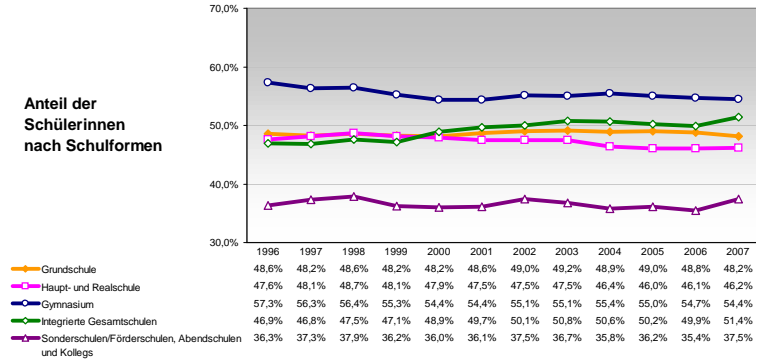
Schüler/innen nach Schulformen relativ zur Bevölkerung der Altersgruppe



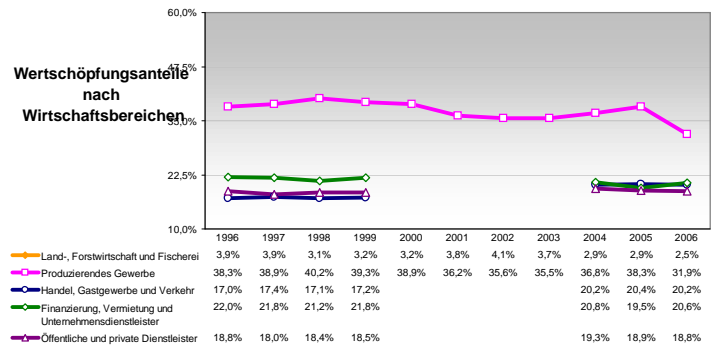
Energieverbrauch und Gewinnung des Produzierenden Gewerbes



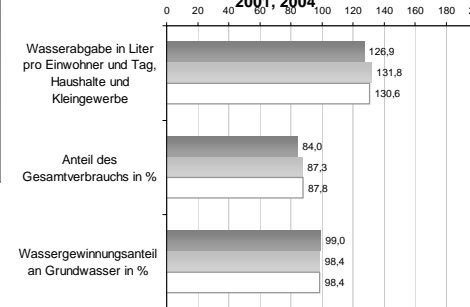
Anteil der Schülerinnen nach Schulformen



Wertschöpfungsanteile nach Wirtschaftsbereichen



Wasserabgabe und Wassergewinnung, 2001, 2004



Anteil der Ausländer/innen nach Schulformen

