

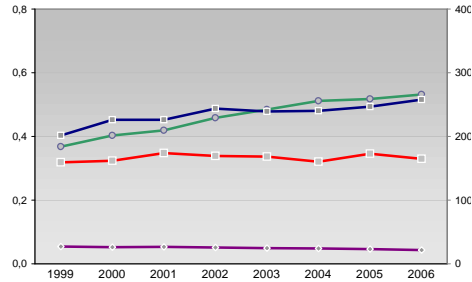
# Finanzen und Erwerbstätigkeit

Wiesbaden, Landeshauptstadt, Kreisfreie Stadt

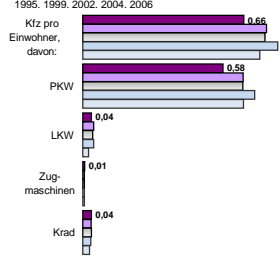
## Versicherungspflichtig Beschäftigte am Arbeitsort [WZ 93]

|              | [D]                    | [E]                          | [F]        | [G]                                  | [H]         | [I]                                 | [J]                              | [K]   | [L, O, P]   |   |
|--------------|------------------------|------------------------------|------------|--------------------------------------|-------------|-------------------------------------|----------------------------------|---|---|---|
|              | Verarbeitendes Gewerbe | Energie und Wasserversorgung | Baugewerbe | Handel; Instandhaltung und Reparatur | Gastgewerbe | Verkehr und Nachrichtenübermittlung | Kredit- und Versicherungsgewerbe | Grundstücks-, Wohnungswesen, Dienstleistungen für Unternehmen | Öffentliche Verwaltung, Verteidigung, Sozialversicherung ect. | Öffentliche und persönliche Dienstleistungen, Private Haushalte |
| [M, N, O, P] | m                      | w                            | männlich   | weiblich                             |             |                                     |                                  |   |   |   |
|              | 10.669                 | 3.790                        |            |                                      | 2006        |                                     |                                  |   |   |   |
|              | 11.360                 | 4.100                        |            |                                      | 2005        |                                     |                                  |   |   |   |
|              | 12.265                 | 4.445                        |            |                                      | 2003        |                                     |                                  |   |   |   |
|              | 13.273                 | 4.819                        |            |                                      | 2001        |                                     |                                  |   |   |   |
|              | 13.379                 | 4.988                        |            |                                      | 1999        |                                     |                                  |   |   |   |
|              | 438                    | 54                           |            |                                      | 2006        |                                     |                                  |   |   |   |
|              | 464                    | 68                           |            |                                      | 2005        |                                     |                                  |   |   |   |
|              | 573                    | 72                           |            |                                      | 2003        |                                     |                                  |   |   |   |
|              | 646                    | 85                           |            |                                      | 2001        |                                     |                                  |   |   |   |
|              | 665                    | 89                           |            |                                      | 1999        |                                     |                                  |   |   |   |
|              | 4.338                  | 571                          |            |                                      | 2006        |                                     |                                  |   |   |   |
|              | 4.159                  | 576                          |            |                                      | 2005        |                                     |                                  |   |   |   |
|              | 4.225                  | 596                          |            |                                      | 2003        |                                     |                                  |   |   |   |
|              | 5.034                  | 693                          |            |                                      | 2001        |                                     |                                  |   |   |   |
|              | 5.310                  | 701                          |            |                                      | 1999        |                                     |                                  |   |   |   |
|              | 8.158                  | 8.111                        |            |                                      | 2006        |                                     |                                  |   |   |   |
|              | 8.365                  | 8.405                        |            |                                      | 2005        |                                     |                                  |   |   |   |
|              | 8.654                  | 8.831                        |            |                                      | 2003        |                                     |                                  |   |   |   |
|              | 9.767                  | 9.563                        |            |                                      | 2001        |                                     |                                  |   |   |   |
|              | 9.302                  | 9.476                        |            |                                      | 1999        |                                     |                                  |   |   |   |
|              | 1.703                  | 1.602                        |            |                                      | 2006        |                                     |                                  |   |   |   |
|              | 1.688                  | 1.627                        |            |                                      | 2005        |                                     |                                  |   |   |   |
|              | 1.909                  | 1.820                        |            |                                      | 2003        |                                     |                                  |   |   |   |
|              | 2.040                  | 1.971                        |            |                                      | 2001        |                                     |                                  |   |   |   |
|              | 1.910                  | 1.885                        |            |                                      | 1999        |                                     |                                  |   |   |   |
|              | 3.242                  | 1.146                        |            |                                      | 2006        |                                     |                                  |   |   |   |
|              | 3.087                  | 1.138                        |            |                                      | 2005        |                                     |                                  |   |   |   |
|              | 2.832                  | 1.144                        |            |                                      | 2003        |                                     |                                  |   |   |   |
|              | 2.977                  | 1.261                        |            |                                      | 2001        |                                     |                                  |   |   |   |
|              | 2.782                  | 612                          |            |                                      | 1999        |                                     |                                  |   |   |   |
|              | 6.650                  | 7.457                        |            |                                      | 2006        |                                     |                                  |   |   |   |
|              | 6.481                  | 7.257                        |            |                                      | 2005        |                                     |                                  |   |   |   |
|              | 6.707                  | 7.058                        |            |                                      | 2003        |                                     |                                  |   |   |   |
|              | 6.720                  | 7.120                        |            |                                      | 2001        |                                     |                                  |   |   |   |
|              | 6.803                  | 7.357                        |            |                                      | 1999        |                                     |                                  |   |   |   |
|              | 11.909                 | 10.706                       |            |                                      | 2006        |                                     |                                  |   |   |   |
|              | 11.333                 | 10.179                       |            |                                      | 2005        |                                     |                                  |   |   |   |
|              | 11.120                 | 9.474                        |            |                                      | 2003        |                                     |                                  |   |   |   |
|              | 10.643                 | 9.301                        |            |                                      | 2001        |                                     |                                  |   |   |   |
|              | 9.150                  | 7.933                        |            |                                      | 1999        |                                     |                                  |   |   |   |
|              | 6.652                  | 9.502                        |            |                                      | 2006        |                                     |                                  |   |   |   |
|              | 6.660                  | 9.364                        |            |                                      | 2005        |                                     |                                  |   |   |   |
|              | 6.744                  | 9.273                        |            |                                      | 2003        |                                     |                                  |   |   |   |
|              | 6.510                  | 8.737                        |            |                                      | 2001        |                                     |                                  |   |   |   |
|              | 6.641                  | 8.927                        |            |                                      | 1999        |                                     |                                  |   |   |   |
|              | 6.983                  | 15.234                       |            |                                      | 2006        |                                     |                                  |   |   |   |
|              | 6.823                  | 15.031                       |            |                                      | 2005        |                                     |                                  |   |   |   |
|              | 7.453                  | 15.327                       |            |                                      | 2003        |                                     |                                  |   |   |   |
|              | 7.064                  | 14.526                       |            |                                      | 2001        |                                     |                                  |   |   |   |
|              | 6.345                  | 13.915                       |            |                                      | 1999        |                                     |                                  |   |   |   |

## Umsatz und Beschäftigte des verarbeitenden und produzierenden Gewerbes



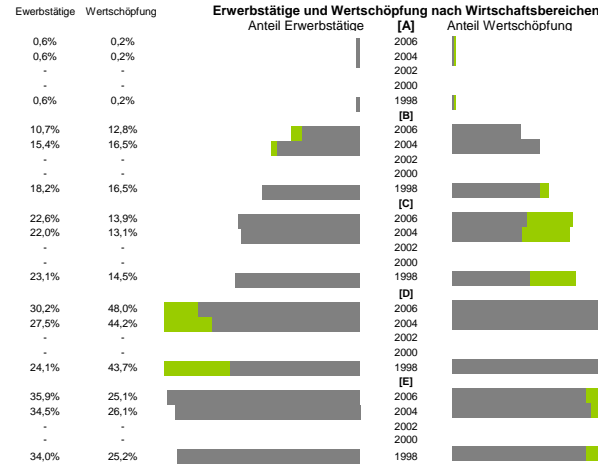
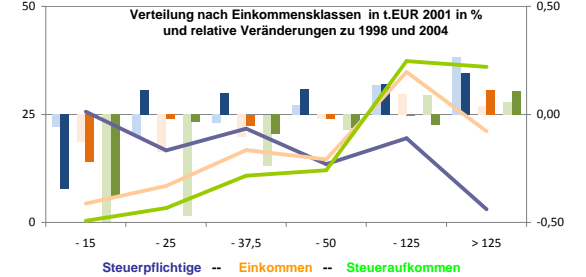
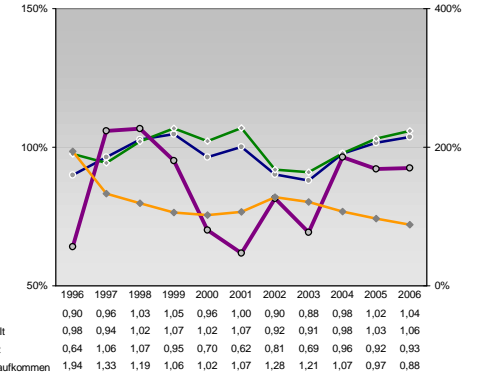
## Kfz pro Einwohner



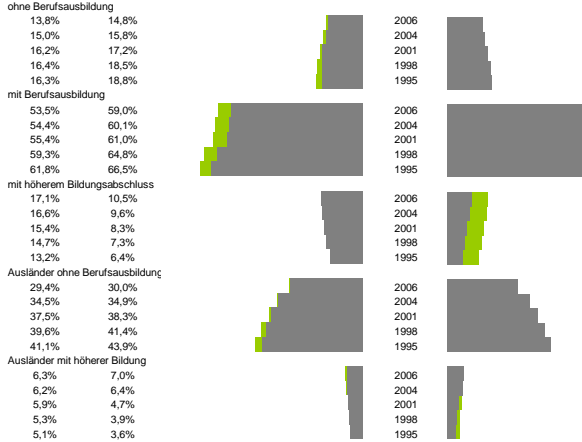
## Wirtschaftsbereiche

- [A]: Land- Forstwirtschaft, Fischerei
- [B]: Produzierendes Gewerbe
- [C]: Handel, Gastgewerbe, Verkehr
- [D]: Finanzierung, Vermietung und Unternehmens
- Unternehmensdienstleister
- Öffentliche und private Dienstleister

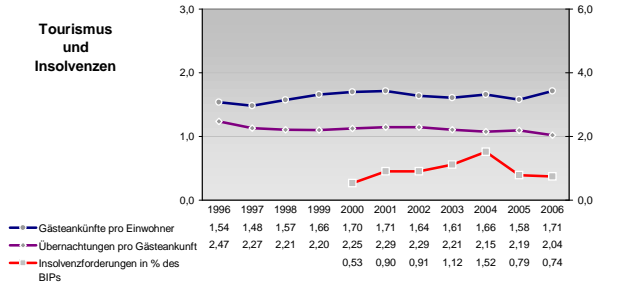
## kommunale Haushalte



## Anteile der Soziversicherungspflichtig Beschäftigten am Arbeitsort

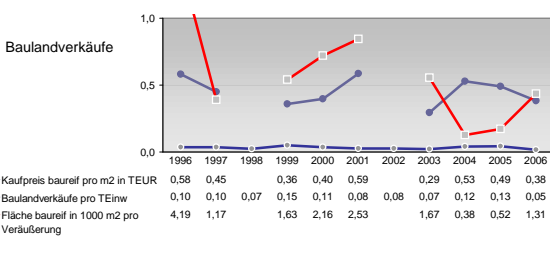
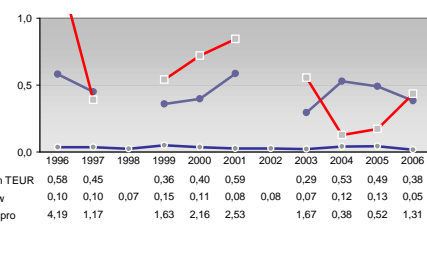
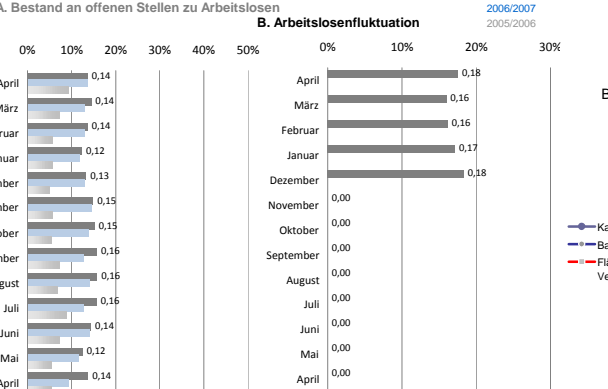
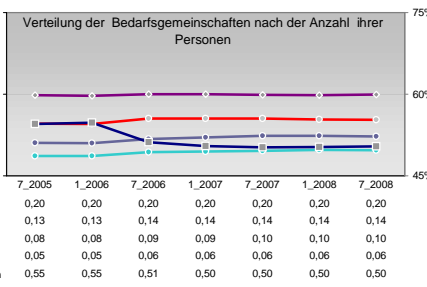
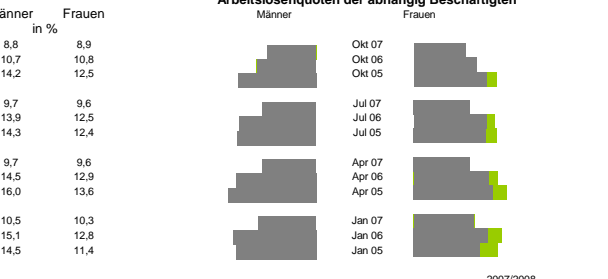
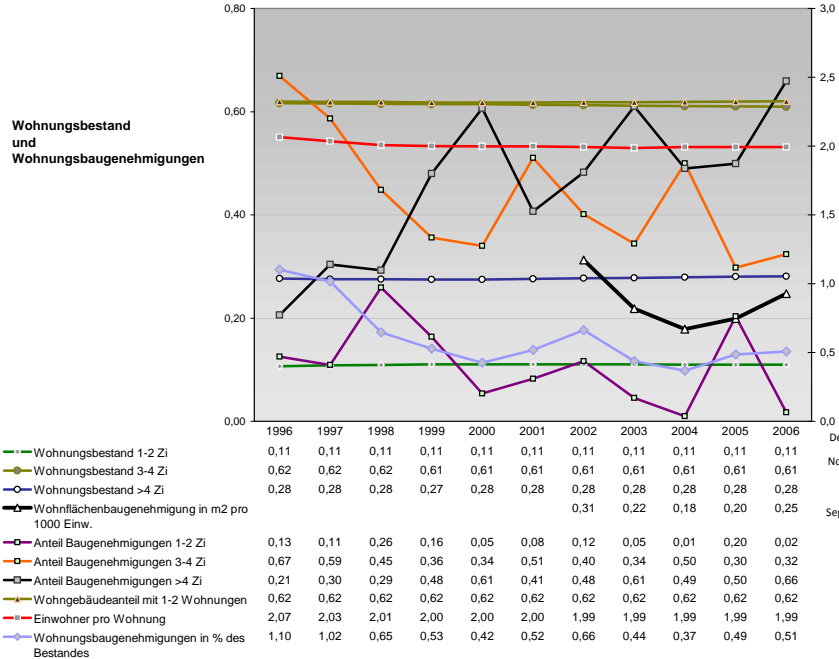
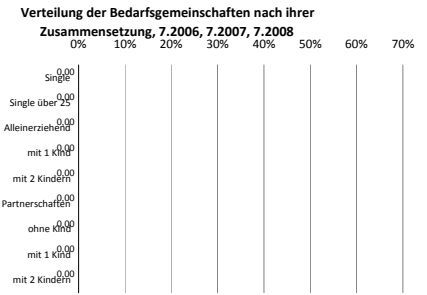
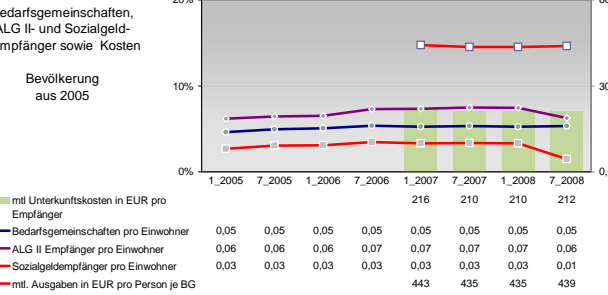
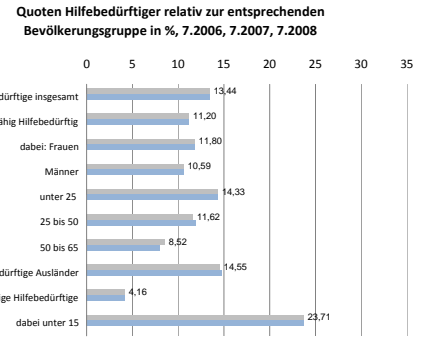
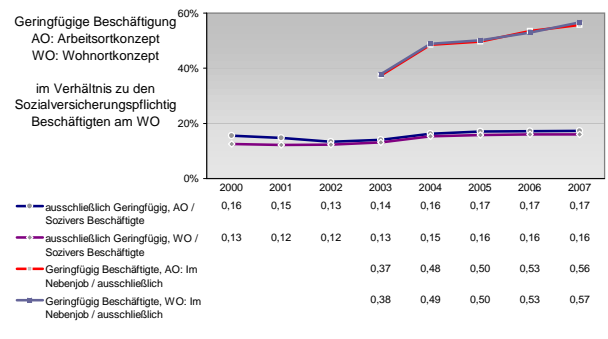
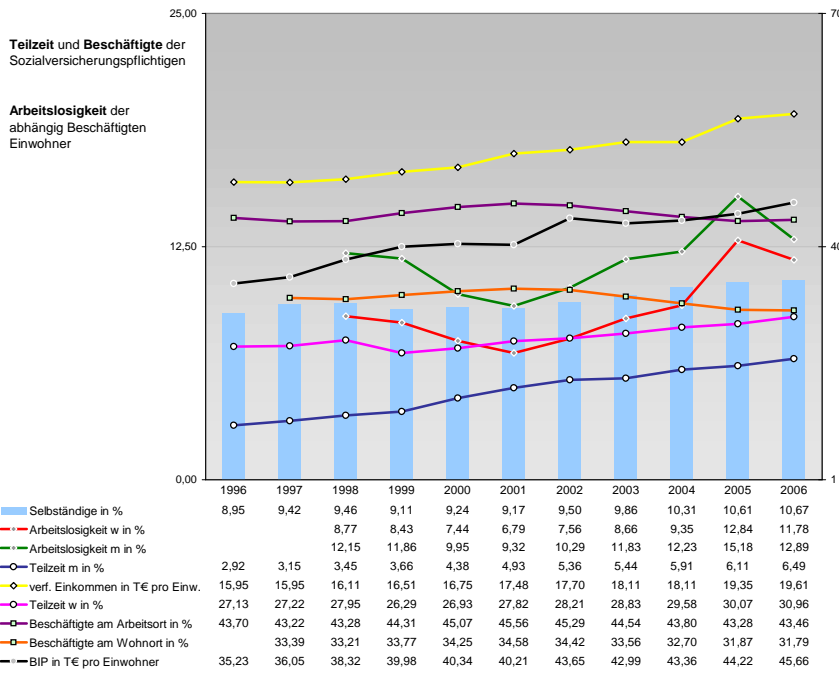


## Tourismus und Insolvenzen



## Gewerbemeldungen





Einblicke in städtische Kundenrefinanzierungs- und Zinsüberschuss Relationen der Bankenwirtschaft erhalten Sie auch mit den Seiten:  
<http://www.rankingweb.de/Banken.html>  
<http://www.rankingweb.de/stadt.html>