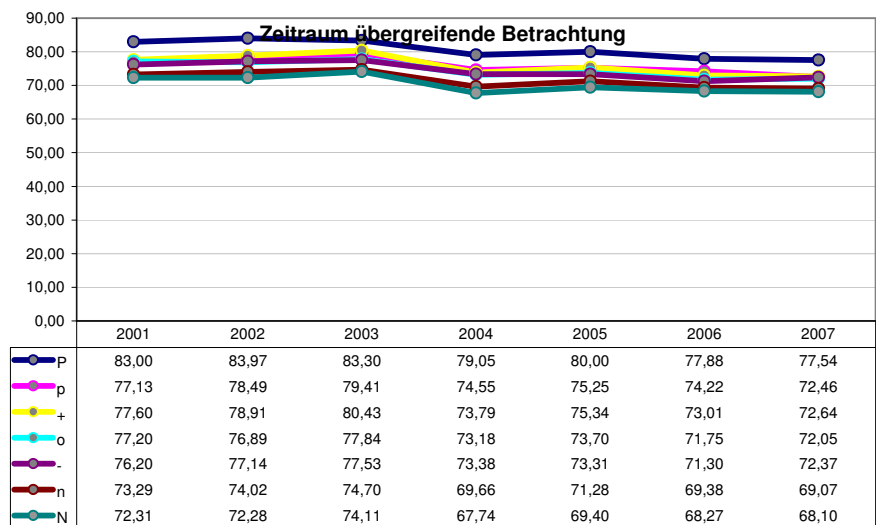
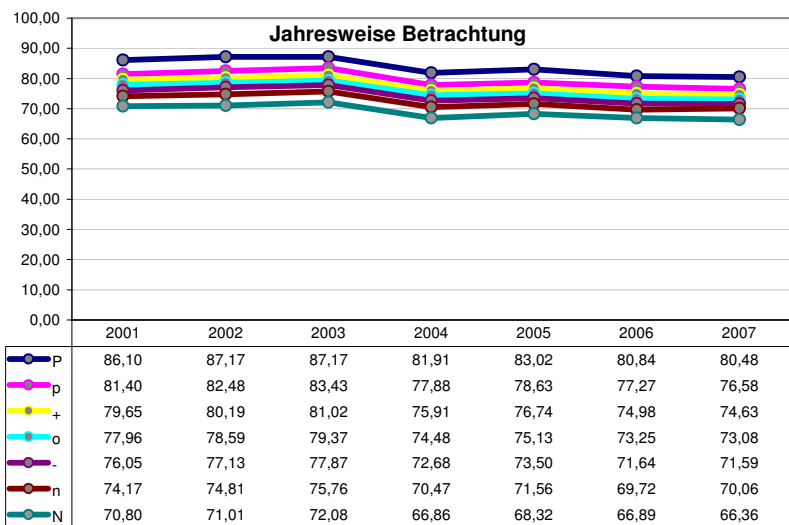


2576	5	15	25	35	45	55	65	75	85	95	90,73	73,6	79,4					
64,41	67,76	70,58	72,38	73,87	75,07	76,63	77,96	79,49	81,53	85,25								
2007	8	6 13	5 9 D 14 7	16 3	12 10 15	1						N	n	-	o	+	p	P
	N	n	-	o	+	p						66,36	70,06	71,59	73,08	74,63	76,58	80,48
	Nn	o-	p+			P						-78%	-98%	-98%	-99%	-99%	-98%	-78%
												68,10	69,07	72,37	72,05	72,64	72,46	77,54
												572%	430%	-43%	464%	479%	1054%	572%
2006	8	13 14 6	D 5	7 16 9 3 15		12 10	1					N	n	-	o	+	p	P
	N	n	-	o	+	p						66,89	69,72	71,64	73,25	74,98	77,27	80,84
	Nn	o-	p+			P						-85%	-97%	-99%	-99%	-98%	-98%	-85%
												68,27	69,38	71,30	71,75	73,01	74,22	77,88
												540%	421%	-59%	426%	478%	1064%	540%
2005	8	6 14	D	9 15 5 13 7	3 16 10 12	1						N	n	-	o	+	p	P
	N	n	-	o	+	p						68,32	71,56	73,50	75,13	76,74	78,63	83,02
	N	n	o-	p+		P						-79%	-98%	-99%	-99%	-99%	-97%	-79%
												69,40	71,28	73,31	73,70	75,34	75,25	80,00
												529%	415%	-59%	418%	462%	1024%	529%
2004	8	6 14 9	D 7 16	5 3 13 10 15		12 1						N	n	-	o	+	p	P
	N	n	-	o	+	p						66,86	70,47	72,68	74,48	75,91	77,88	81,91
	N	n	o+	p		P						-82%	-98%	-99%	-99%	-99%	-98%	-82%
												67,74	69,66	73,38	73,18	73,79	74,55	79,05
												487%	362%	-64%	386%	412%	972%	487%
2003	8	6	9 5 D 14	16 7 15 3 13	1 10 12							N	n	-	o	+	p	P
												72,08	75,76	77,87	79,37	81,02	83,43	87,17
												-89%	-97%	-99%	-99%	-99%	-97%	-89%
												74,11	74,70	77,53	77,84	80,43	79,41	83,30
												567%	433%	-61%	453%	516%	1102%	567%
2002	8	6 9	7 D 3 14 5	10 16 13 1	15	12						N	n	-	o	+	p	P
												71,01	74,81	77,13	78,59	80,19	82,48	87,17
												-79%	-97%	-99%	-99%	-99%	-97%	-79%
												72,28	74,02	77,14	76,89	78,91	78,49	83,97
												499%	372%	-58%	372%	427%	943%	499%
2001	8	6 9	7 14 D	5 10 3	1 13 16 15	12						N	n	-	o	+p	p	P
												70,80	74,17	76,05	77,96	79,65	81,40	86,10
												-80%	-98%	-99%	-99%	-99%	-97%	-80%
												72,31	73,29	76,20	77,20	77,60	77,13	83,00
												531%	388%	-53%	432%	469%	999%	531%
[75_100]_w																		
Average:	Avg:	N	n	-	o	+	p	P				Avg:						
	76,10	68,90	72,36	74,35	75,98	77,59	79,67	83,81				-1,4%	-1,3%	-1,3%	-1,4%	-1,4%	-1,3%	-1,4%
	74,80	70,32	71,63	74,46	74,66	75,96	75,93	80,68				-1,4%	-1,3%	-1,3%	-1,3%	-1,4%	-1,5%	-1,3%



2576	5	15	25	35	45	55	65	75	85	95	109,82	83,2	91,8					
69,80	74,62	78,69	81,20	83,31	85,36	87,42	89,50	92,17	95,11	100,39								
2007	8	6 9 D 3	7 12 14 5 13	1	15 10	16						N	n	-	o	+	p	P
	N	n	-o	+	p	P						72,02	75,99	79,09	80,87	82,88	85,60	90,38
	N	n	P-	o+	p							-85%	-97%	-99%	-99%	-98%	-98%	-85%
												73,88	76,35	80,41	81,83	82,71	83,51	78,80
												1930%	-56%	-65%	-48%	-66%	383%	1930%
2006	8 6	D 9	3 14 7 5 13	12 1 10		15 16												
	N	n	-	o	+	p	P					73,31	76,73	79,30	81,75	83,71	86,10	89,72
	Nn	P-	o+	p								-88%	-97%	-98%	-99%	-98%	-98%	-88%
												74,79	77,16	80,50	82,31	83,21	83,33	79,12
												2335%	-64%	-53%	-55%	-46%	447%	2335%
2005	8	6	7 D 9 3 1 5	13 14 12	10	16	15											
	N	n	-	o	+	p	P					76,03	79,68	82,02	83,99	86,15	88,71	93,61
	N	n	P-	o	p+							-88%	-98%	-99%	-99%	-99%	-97%	-88%
												78,07	79,75	83,02	84,44	85,90	85,63	82,86
												2344%	-61%	-60%	-68%	-65%	447%	2344%
2004	8	7 6 9	D 3 10 13	5 1 14	12	16 15												
	N	n	-	o	+	p	P					75,41	79,72	82,32	84,86	87,12	89,59	94,38
	N	n	n-P	o	+p							-89%	-99%	-98%	-99%	-99%	-97%	-89%
												77,29	81,37	82,83	84,32	86,85	87,32	82,84
												2006%	-70%	-63%	-54%	-41%	378%	2006%
2003	8	6 9	D 5 3 1	7 10 14 13	15 12 16													
	N	n	-	o	+	p	P					81,80	86,03	88,63	90,92	93,34	96,20	101,22
	N	n	n-	o	p+							-85%	-98%	-99%	-99%	-98%	-99%	-85%
												83,79	87,43	89,41	91,04	93,05	92,79	89,51
												2196%	-60%	-51%	-46%	-47%	404%	2196%
2002	8	6	9 7 5 D	3 1	10 14 13	16 12 15												
	N	n	-	o	+	p	P					81,46	86,17	89,16	91,92	94,46	98,15	104,19
	N	n	-Po	+	p							-78%	-97%	-99%	-99%	-97%	-98%	-78%
												84,33	87,47	89,57	91,47	94,06	95,54	91,03
												1680%	-64%	-54%	-59%	-36%	313%	1680%
2001	8	6 9	5 D 7 3 1	14 10	16 13 12 15													
	N	n	-	o	+p	P						83,21	88,37	91,34	93,56	95,85	99,38	105,15
	N	n	n-	o	p							-82%	-98%	-98%	-99%	-98%	-98%	-82%
												85,88	90,90	91,71	93,84	94,90	95,42	92,32
												1917%	-44%	-47%	-32%	-62%	338%	1917%

[75_100]_m

Average:

Avg:	N	n	-	o	+	p	P
86,97	77,61	81,81	84,55	86,84	89,07	91,96	96,95
85,43	79,72	82,92	85,35	87,04	88,67	89,08	85,21

Trends:

Avg:	N	n	-	o	+	p	P
-2,7%	-2,6%	-2,7%	-2,7%	-2,7%	-2,7%	-2,8%	-3,0%
-2,7%	-2,7%	-3,1%	-2,4%	-2,5%	-2,6%	-2,7%	-3,0%

