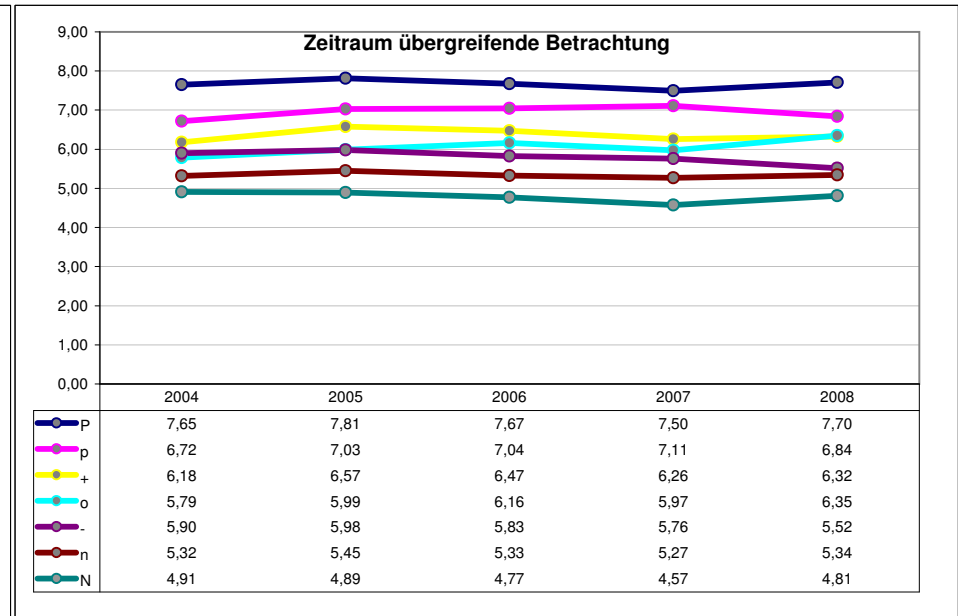
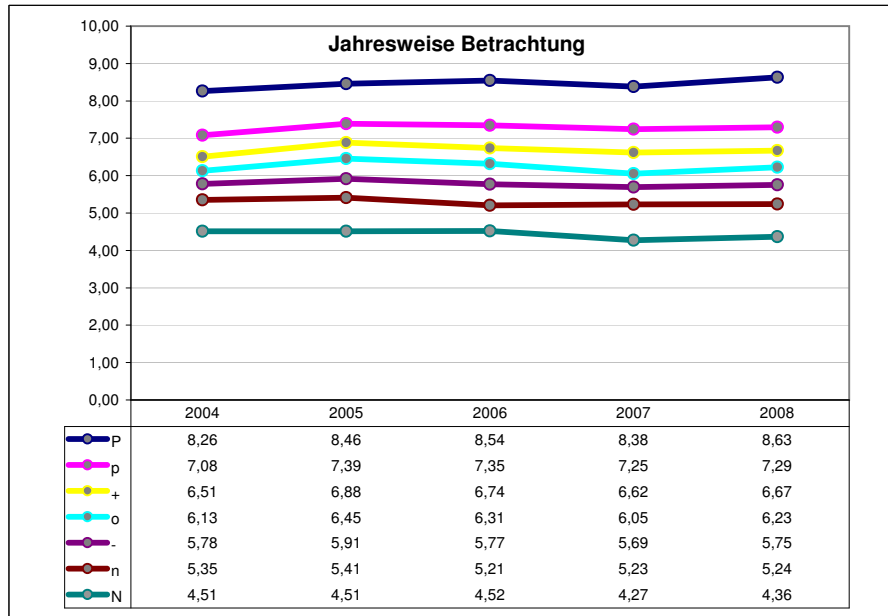


1745	5	15	25	35	45	55	65	75	85	95										
3,71	4,27	5,00	5,43	5,76	6,06	6,40	6,73	7,07	7,74	8,69	9,46			5,7	7,2					
2008	14	16	12 8	9	6 D	15 3	7 1	5	10					N	n	-	o	+	p	P
	N	n	-	o	+	p	P							4,36	5,24	5,75	6,23	6,67	7,29	8,63
	N	n	-	o	+	p	P							-81%	-98%	-99%	-99%	-99%	-96%	-81%
	N	n	-	o	+	p	P							4,81	5,34	5,52	6,35	6,32	6,84	7,70
	N	n	-	o	+	p	P							-21%	30%	-26%	94%	49%	-61%	-21%
2007		14	12 8	16 9	6 15 D	3 1	7 5		10					4,27	5,23	5,69	6,05	6,62	7,25	8,38
	N	n	-	o	+	p	P							-89%	-98%	-99%	-99%	-98%	-96%	-89%
	N	n	-	o	+	p	P							4,57	5,27	5,76	5,97	6,26	7,11	7,50
	N	n	-	o	+	p	P							-48%	16%	5%	47%	79%	-45%	-48%
2006			8 14 16	12	9 6	D 1	15 3 7	5	10					4,52	5,21	5,77	6,31	6,74	7,35	8,54
	N	n	-	o	+	p	P							-87%	-98%	-99%	-98%	-99%	-95%	-87%
	N	n	-	o	+	p	P							4,77	5,33	5,83	6,16	6,47	7,04	7,67
	N	n	-	o	+	p	P							-37%	4%	3%	72%	76%	-29%	-37%
2005			8 16	14 9 6	12 D 1	7 3 5	15	10						4,51	5,41	5,91	6,45	6,88	7,39	8,46
	N	n	-	o	+	p	P							-83%	-98%	-99%	-98%	-99%	-98%	-83%
	N	n	-	o	+	p	P							4,89	5,45	5,98	5,99	6,57	7,03	7,81
	N	n	-	o	+	p	P							-55%	40%	-3%	73%	84%	-46%	-55%
2004			8	14 6 9	16 15 3 D 12	7	1 5	10						4,51	5,35	5,78	6,13	6,51	7,08	8,26
	N	n	-	o	+	p	P							-82%	-98%	-99%	-99%	-99%	-97%	-82%
	N	n	-	o	+	p	P							4,91	5,32	5,90	5,79	6,18	6,72	7,65
	N	n	-	o	+	p	P							-48%	38%	-12%	75%	96%	-25%	-48%

[60\_65]\_w

Avg:	N	n	-	o	+	p	P	
Average:	6,31	4,44	5,29	5,78	6,24	6,68	7,27	8,45
	6,14	4,79	5,34	5,80	6,05	6,36	6,95	7,67

Avg:	Trends:	-	o	+	p	P		
	-0,2%	-1,2%	-0,8%	-0,5%	-0,3%	0,1%	0,4%	0,8%
	-0,1%	-1,1%	-0,2%	-1,7%	1,8%	0,0%	0,5%	-0,3%



1745	5	15	25	35	45	55	65	75	85	95	18,60	11,8	14,3					
	7,90	9,33	10,63	11,30	11,91	12,48	13,03	13,62	14,22	15,08	16,74							
2008	8	9	6 12 1 D 7	3 14 16 5	15 10							N	n	-	o	+	p	P
	N	n	-	o	+	p	P					9,03	10,47	11,29	12,05	12,75	13,65	15,63
	Nn	-o	p	+	P							-82%	-99%	-99%	-99%	-99%	-97%	-82%
												9,76	10,38	11,33	11,42	12,57	12,14	14,76
												-55%	-13%	14%	126%	114%	170%	-55%
2007	8	9	6 14 D 7	1 16 5 3 12	10 15							N	n	-	o	+	p	P
	N	n	-	o	+	p	P					9,34	10,89	11,79	12,58	13,31	14,11	16,08
	N	n	o	-	+p	P						-71%	-97%	-99%	-99%	-99%	-98%	-71%
												10,13	10,87	12,07	11,91	12,47	12,93	15,12
												-39%	7%	6%	167%	90%	185%	-39%
2006	8	6	9 1 7 D 3 14	5 12 16 15	10							N	n	-	o	+	p	P
	N	n	-	o	+	p	P					9,70	11,20	12,07	12,80	13,70	14,64	16,41
	N	n	n	-o	+	p	P					-80%	-98%	-99%	-99%	-99%	-97%	-80%
												10,25	11,56	11,97	12,08	12,91	13,43	15,61
												-53%	-10%	15%	138%	103%	202%	-53%
2005	8	9	6 1 D 3	14 7 5 16	12 15 10							N	n	-	o	+	p	P
	N	n	-	o	+	p	P					10,03	11,48	12,44	13,22	13,96	14,94	16,70
	N	n	n	o+	o	+	p	P				-84%	-98%	-99%	-99%	-99%	-97%	-84%
												10,65	11,62	12,55	12,55	13,00	13,71	15,92
												-58%	-2%	39%	168%	83%	211%	-58%
2004	8	9 6	D 7 3	14 1 5	16 12 10 15							N	n	-	o	+	p	P
	N	n	-	o	+	p	P					10,09	11,48	12,48	13,33	14,07	14,91	16,92
	N	n	-	o	+	p	P					-74%	-98%	-99%	-99%	-99%	-97%	-74%
												10,77	11,64	12,08	12,53	13,33	13,83	16,20
												-43%	-6%	3%	151%	89%	197%	-43%

[60\_65]\_m

Average:	Avg:	N	n	-	o	+	p	P
	12,84	9,64	11,10	12,01	12,79	13,56	14,45	16,35
	12,46	10,31	11,21	12,00	12,10	12,86	13,21	15,52

Trends:	Avg:	-2,4%	-2,9%	-2,4%	-2,5%	-2,5%	-2,4%	-2,3%	-2,0%
	-2,4%	-2,5%	-2,9%	-1,6%	-2,4%	-1,6%	-3,2%	-2,4%	

