

1645	5	15	25	35	45	55	65	75	85	95	
22,78	25,11	27,08	28,54	29,65	30,73	31,72	32,77	33,96	35,39	38,29	42,26

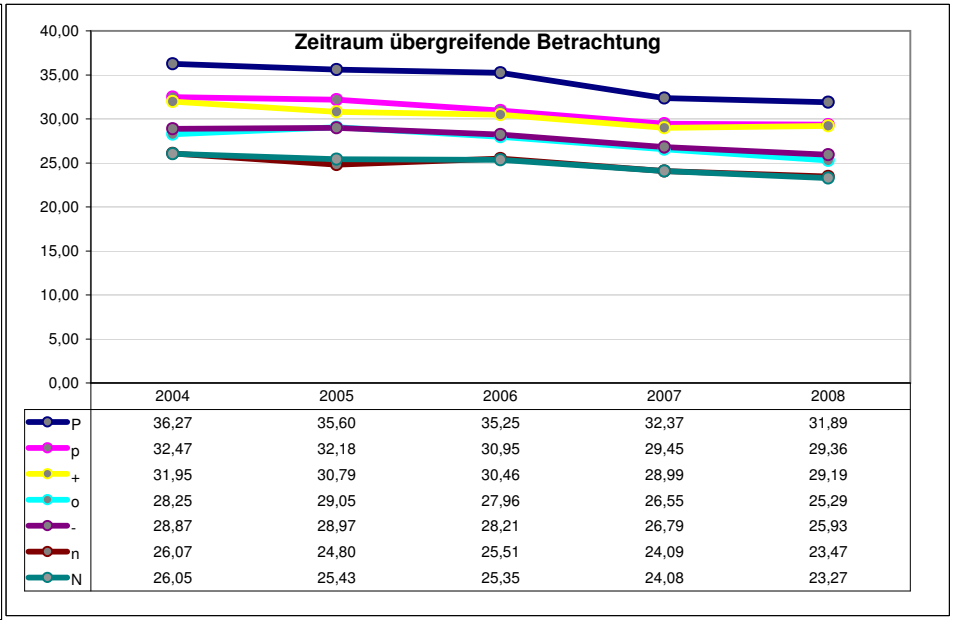
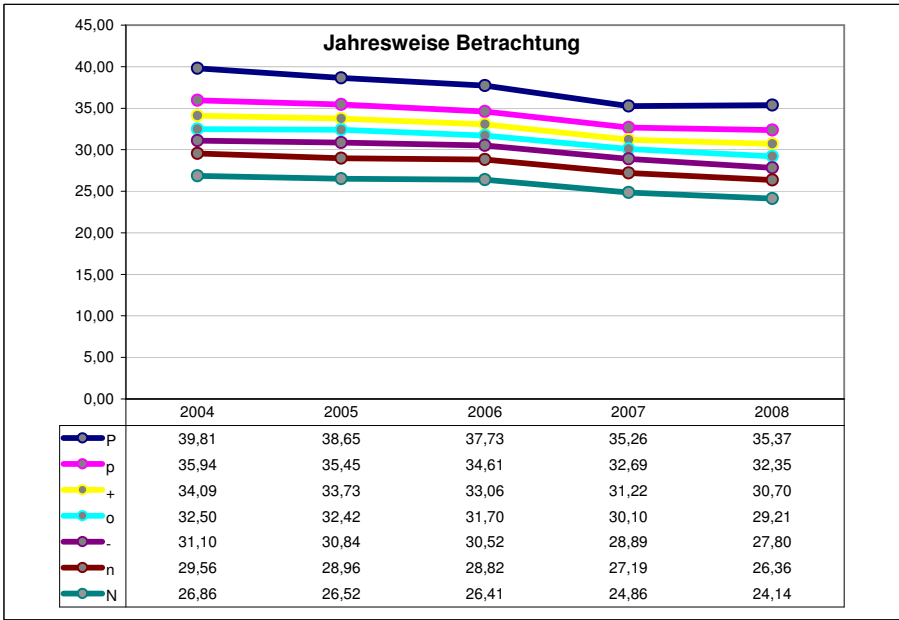
29,5 33,9

	N	n	-	o	+	p	P												
2008	8	9	14	3	7	D	5	1	12	10	16	15	24,14	26,36	27,80	29,21	30,70	32,35	35,37
	N	n	-	o	+	p	P						-88%	-98%	-98%	-99%	-99%	-97%	-88%
	Nn	o-		+p		P							23,27	23,47	25,93	25,29	29,19	29,36	31,89
													257%	642%	394%	641%	389%	546%	257%
2007	8	14	9	D	5	3	1	7	16	12	10	15	24,86	27,19	28,89	30,10	31,22	32,69	35,26
	N	n	-	o	+	p	P						-89%	-98%	-98%	-99%	-99%	-98%	-89%
	Nn	o-		+p		P							24,08	24,09	26,79	26,55	28,99	29,45	32,37
													348%	846%	534%	872%	472%	642%	348%
2006	8	14	9	D	1	7	5	16	12	15	10	16	26,41	28,82	30,52	31,70	33,06	34,61	37,73
	N	n	-	o	+	p	P						-76%	-99%	-99%	-99%	-99%	-98%	-76%
	Nn	o-		+p		P							25,35	25,51	28,21	27,96	30,46	30,95	35,25
													356%	770%	487%	795%	414%	575%	356%
2005	8	9	3	14	D	1	5	7	10	12	15	16	26,52	28,96	30,84	32,42	33,73	35,45	38,65
	N	n	-	o	+	p	P						-88%	-97%	-98%	-99%	-99%	-97%	-88%
	n	N	o-		+p	P							25,43	24,80	28,97	29,05	30,79	32,18	35,60
													290%	607%	445%	722%	359%	534%	290%
2004	8	9	1	3	14	D	5	7	12	15	10	16	26,86	29,56	31,10	32,50	34,09	35,94	39,81
	N	n	-	o	+	p	P						-84%	-99%	-99%	-99%	-99%	-97%	-84%
	Nn	o-		+p		P							26,05	26,07	28,87	28,25	31,95	32,47	36,27
													278%	616%	376%	613%	356%	515%	278%

[75_80]_w

Average:	Avg:	N	n	-	o	+	p	P
	31,30	25,76	28,18	29,83	31,18	32,56	34,21	37,36
	28,60	24,84	24,79	27,76	27,42	30,28	30,88	34,28

Trends:	Avg:	-2,9%	-2,8%	-2,9%	-2,9%	-2,9%	-2,9%	-2,9%	-3,3%
	-2,9%	-2,8%	-2,4%	-2,9%	-3,1%	-2,4%	-2,9%	-3,5%	



1645	5	15	25	35	45	55	65	75	85	95									
38,86	42,80	46,49	48,88	50,97	52,63	54,27	55,89	58,00	60,54	64,78	70,58		50,1	57,5					
2008	8	14	9 D	12 3 1	7 5	16	10 15						N	n	-	o	+	p	P
	N	n	-	o	+	p	P						41,96	46,30	48,57	50,78	52,90	55,38	60,22
	No	n-	+		p	P							-84%	-99%	-99%	-99%	-98%	-98%	-84%
													41,21	43,91	45,40	41,57	47,41	51,08	54,65
													521%	315%	485%	1107%	700%	454%	521%
2007	8		9	14 1 D	3	12 7 5	16 15 10						N	n	-	o	+	p	P
	N		n	-	o	+	p	P					42,47	46,69	49,33	51,89	54,42	57,57	62,88
	N	on-	+		p	P							-84%	-99%	-99%	-99%	-99%	-97%	-84%
													41,47	44,52	45,07	42,91	48,94	54,20	56,65
													410%	215%	343%	864%	548%	369%	410%
2006		8		1	9 3 D	14 7	5 12	16	15 10				N	n	-	o	+	p	P
	N		n	-	o	+	p	P					44,21	48,68	51,73	54,03	56,78	59,81	64,50
	Non	-		+	p	P							-88%	-98%	-98%	-99%	-98%	-98%	-88%
													43,33	45,91	48,57	44,19	51,18	54,74	58,30
													434%	247%	429%	960%	632%	400%	434%
2005			8	1	9	3 D	14 7	5 12	16 10 15				N	n	-	o	+	p	P
			N	n	-	o	+	p	P				46,48	50,71	53,27	55,37	57,79	60,82	65,79
	No	n	+		p	P							-79%	-98%	-99%	-99%	-98%	-98%	-79%
													45,41	48,57	49,64	45,61	50,58	56,22	60,08
													542%	338%	509%	1169%	695%	476%	542%
2004			8	9	1	3 D 7	5 10 14	12 16	15				N	n	-	o	+	p	P
			N	n	-	o	+	p	P				44,55	49,98	52,87	54,94	57,17	59,41	65,24
	No	n	+		p	P							-82%	-97%	-99%	-99%	-99%	-98%	-82%
													42,96	48,80	49,28	44,63	50,40	55,04	59,12
													490%	302%	471%	1034%	653%	425%	490%

[75_80]_m

Average:	Avg:	N	n	-	o	+	p	P	Trends:	Avg:	-2,2%	-2,1%	-2,3%	-2,5%	-2,2%	-2,1%	-1,9%	-2,0%
		53,58	43,93	48,47	51,16	53,40	55,81	58,60		63,72	-2,1%	-1,7%	-3,0%	-2,6%	-2,0%	-1,5%	-1,8%	-2,1%
		48,90	42,88	46,34	47,59	43,78	49,70	54,26	57,76									

