

2695	5	15	25	35	45	55	65	75	85	95	
0,82	0,94	1,16	1,30	1,41	1,51	1,59	1,68	1,80	1,96	2,24	2,53

1,4 1,8

	N	n	-	o	+	p	P
2004	14 9	8	6 D	7 12 3	5 13 1 10 16	15	
	N	n	-	o+		p	P
	N	n		o-	+p	P	
	1,04	1,21	1,33	1,50	1,51	1,70	1,91
	11%	-39%	-28%	-5%	-20%	2%	11%
	1,16	1,30	1,47	1,43	1,51	1,54	1,80
	-26%	-41%	6%	-32%	-29%	-27%	-26%
2003	8 9	6	16 14 12 D	3 7 5 1 15	10	13	
	N	n-		o+		p	P
		N	-n	o	+	pP	
	1,12	1,31	1,36	1,52	1,55	1,76	1,95
	2%	-35%	-2%	13%	-23%	-6%	2%
	1,28	1,42	1,40	1,44	1,58	1,68	1,76
	-9%	-20%	-17%	-18%	-26%	-25%	-9%
2002	8	14 9	7	16 D 6 1	12 5 15 3 10	13	
	N	n	-	o		+p	P
		N	n		+	p	P
	1,11	1,33	1,44	1,55	1,71	1,77	2,03
	3%	-32%	-14%	-16%	-34%	-12%	3%
	1,28	1,32	1,54	1,60	1,55	1,74	1,92
	-36%	-36%	-46%	-12%	-30%	-17%	-36%
2001	8	14 9 12	16 7 6	D 13 3	15 5	10 1	
	N	n	-o		+	p	P
		Nn		-o	+p	P	
	1,16	1,33	1,46	1,49	1,61	1,76	2,06
	16%	-27%	-7%	-11%	-35%	-20%	16%
	1,31	1,41	1,52	1,54	1,60	1,64	1,86
	10%	-52%	-37%	-29%	6%	1%	10%
2000	8	9	16 14 15	6 D	13 7 12 5 3	1	10
	N	n	-	o		+	p
		N	n		+	p	P
	1,08	1,32	1,47	1,56	1,71	1,83	2,13
	5%	-16%	-17%	-6%	-23%	-39%	5%
	1,27	1,34	1,58	1,60	1,67	1,78	1,87
	-3%	-52%	-11%	-30%	-23%	-18%	-3%
1999	15	8 16 6 9	7 D	3 14 12 5 1	13 10		
	N	n	-	o		+	p
		N	n	o+	-	pP	P
	1,15	1,37	1,49	1,59	1,76	1,83	2,06
	2%	-34%	-28%	-3%	-23%	-15%	2%
	1,31	1,48	1,68	1,55	1,58	1,81	1,86
	-25%	-27%	-14%	2%	-21%	-33%	-25%
1998	8	9 6	7 15	D 16 14 3 5 12	10 1	13	
	N	n	-	o		+	p
		N	n-	o		+	p
	1,15	1,37	1,53	1,62	1,79	1,88	2,18
	-64%	-63%	-62%	-58%	-51%	-61%	-64%
	1,34	1,46	1,51	1,65	1,74	1,82	2,00
	-13%	-32%	-37%	-23%	-24%	-34%	-13%

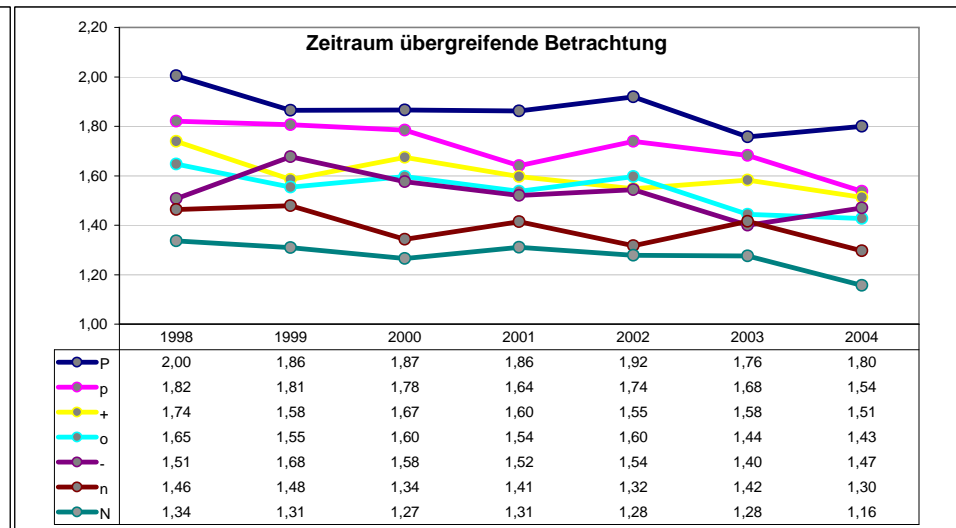
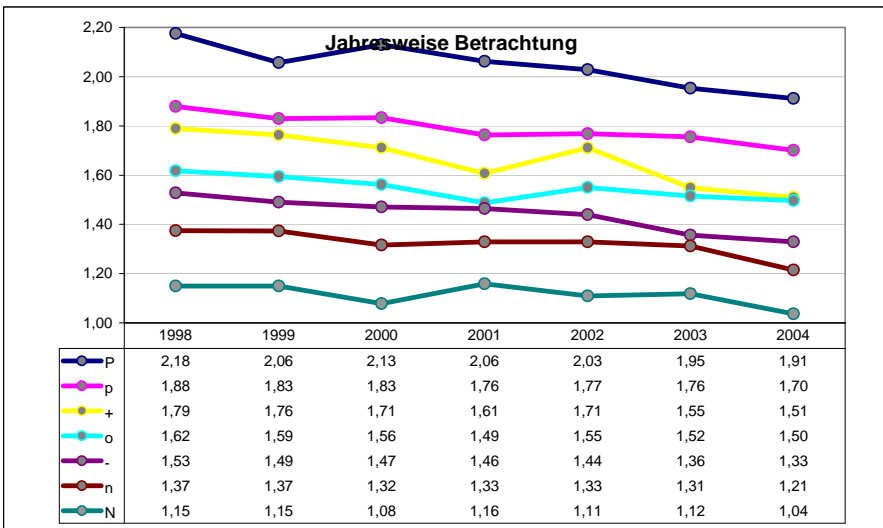
[40_50]_w

Average:

Avg:	N	n	-	o	+	p	P
1,56	1,11	1,32	1,44	1,55	1,66	1,79	2,05
1,56	1,28	1,39	1,53	1,54	1,61	1,72	1,87

Trends:

Avg:	N	n	-	o	+	p	P
-1,8%	-1,2%	-1,6%	-2,2%	-1,2%	-2,7%	-1,5%	-1,9%
-1,8%	-1,7%	-1,7%	-1,6%	-2,0%	-1,8%	-2,4%	-1,5%



Mittelwerte

2695	5	15	25	35	45	55	65	75	85	95	
1,64	1,93	2,24	2,45	2,64	2,82	3,01	3,23	3,50	3,87	4,51	5,01

2,8 3,6

	N	n	-	o	+	p	P											
2004	8	6	97	5	D3	101	16	14 12	15 13	1,97	2,34	2,58	2,76	3,02	3,25	3,81		
	N	n	-	o		+	p	P		-19%	-42%	-29%	-30%	-55%	4%	-19%		
	N	n	-	o		+	p	P		2,07	2,32	2,47	2,69	3,06	3,35	3,79		
										-53%	-70%	-73%	-64%	-56%	-48%	-53%		
2003	8	9	67	35	D	1	10 16	12 14	15	13	2,21	2,50	2,72	2,88	3,25	3,30	3,97	
	N	n	-	o		+	p	P		-20%	-37%	-33%	-31%	-19%	-15%	-20%		
	N	n	-	o		+	p	P		2,28	2,54	2,66	2,89	3,08	3,46	3,91		
										-45%	-71%	-62%	-43%	-57%	-21%	-45%		
2002	8	79	6	5	1	D3	10	16	14	12 13	15	2,10	2,47	2,74	2,98	3,14	3,43	3,95
	N	n	-	o		+	p	P		-37%	-49%	-38%	-35%	-32%	-37%	-37%		
	N	n	-	o		+	p	P		2,17	2,54	2,62	2,93	3,17	3,47	3,92		
										-51%	-72%	-70%	-59%	-37%	-45%	-51%		
2001	8	67	9	5	3	10	D1	16	12	14	15 13	2,17	2,47	2,66	3,10	3,30	3,44	4,02
	N	n	-	o		+	p	P		-19%	-32%	-38%	-16%	-10%	-13%	-19%		
	N	n	-	o		+	p	P		2,23	2,48	2,61	2,96	3,32	3,55	4,02		
										-38%	-80%	-68%	-59%	-40%	-48%	-38%		
2000	8	97	6	53	D	10	16	14	12	15	13	2,25	2,52	2,75	3,11	3,36	3,64	4,03
	N	n	-	o		+	p	P		4%	-36%	-36%	-41%	-13%	-16%	4%		
	N	n	-	o		+	p	P		2,28	2,62	2,73	3,02	3,18	3,63	4,21		
										-37%	-76%	-69%	-56%	-58%	-41%	-37%		
1999	8	69	75	D	13	16	14	10	15	12	13	2,22	2,61	2,84	3,10	3,22	3,62	4,12
	N	n	-	o		+	p	P		5%	-53%	-42%	-30%	0%	-17%	5%		
	N	n	-	o		+	p	P		2,32	2,54	2,82	2,96	3,35	3,68	4,10		
										-45%	-67%	-66%	-64%	-59%	-51%	-45%		
1998	8	67	9	35	D	10	16	14	12	15	13	2,25	2,58	2,85	3,14	3,35	3,68	4,23
	N	n	-	o		+	p	P		-56%	-80%	-68%	-55%	-30%	-63%	-56%		
	N	n	-	o		+	p	P		2,42	2,64	2,70	3,12	3,36	3,67	4,19		
										-33%	-62%	-66%	-43%	-51%	-57%	-33%		

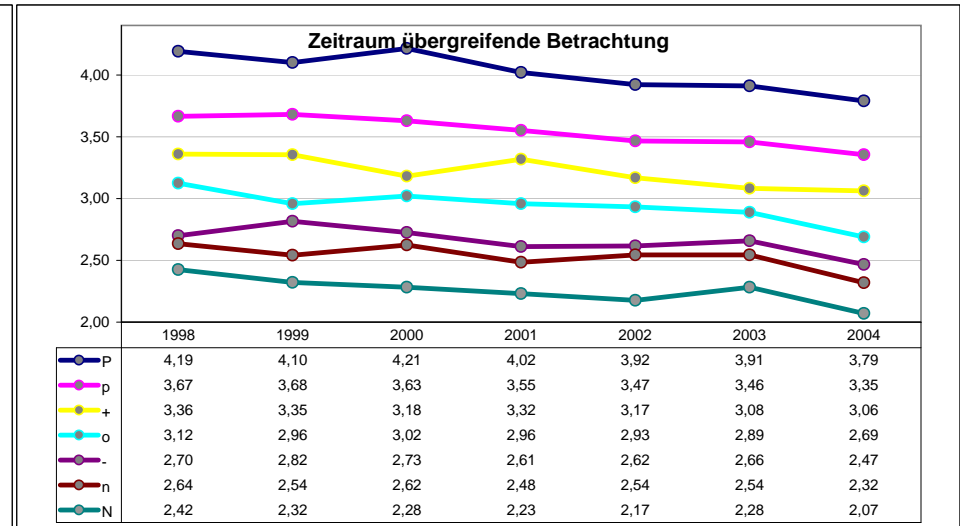
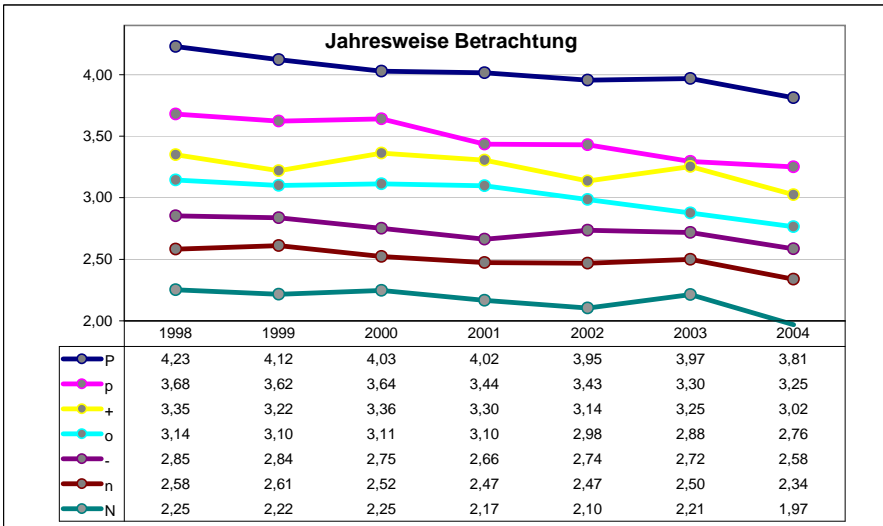
[40_50]_m

Average:

Avg:	N	n	-	o	+	p	P
3,02	2,17	2,50	2,73	3,01	3,24	3,48	4,02
3,02	2,25	2,53	2,66	2,94	3,22	3,54	4,02

Trends:

Avg:	N	n	-	o	+	p	P
-1,6%	-1,7%	-1,5%	-1,4%	-2,0%	-1,3%	-2,2%	-1,5%
-1,7%	-2,0%	-1,5%	-1,5%	-1,9%	-1,6%	-1,6%	-1,7%



Mittelwerte