

2695	5	15	25	35	45	55	65	75	85	95	1,40	1,67	2,18	2,48	2,70	2,90	3,07	3,25	3,46	3,80	4,39	5,00	2,6	3,5	N	n	-	o	+	p	P
2004	14 8 15 9 16 6 D 12 7 3 13 1 5 10											2,12	2,33	2,55	2,84	2,97	3,20	3,65	-7%	10%	-13%	-15%	6%	-23%	-7%						
	N n - o + p P											2,27	2,60	2,69	2,79	2,92	3,04	3,34	-9%	-27%	-23%	-12%	-25%	-26%	-9%						
2003	14 8 12 13 16 15 9 6 D 7 3 5 1 10											2,10	2,53	2,78	2,84	3,13	3,41	3,97	14%	-16%	13%	-13%	6%	-24%	14%						
	N n -o + p P											2,50	2,65	2,70	3,25	2,95	3,20	3,50	0%	-43%	-32%	-47%	9%	-7%	0%						
2002	14 8 6 9 15 13 1 16 D 3 12 10 7 5											2,00	2,64	2,75	2,98	3,23	3,39	3,94	-14%	-16%	-6%	-12%	41%	-7%	-14%						
	N n - o + p P											2,42	2,72	2,89	3,12	3,14	3,17	3,50	-15%	-9%	-38%	-20%	-10%	-8%	-15%						
2001	16 14 15 9 13 8 12 D 1 6 3 5 7 10											2,19	2,64	2,95	2,96	3,17	3,49	3,95	26%	2%	-24%	4%	-5%	-23%	26%						
	N n -o + p P											2,59	2,93	2,93	2,96	3,21	3,34	3,41	0%	-11%	-12%	-8%	5%	-47%	0%						
2000	16 14 12 8 7 9 15 6 3 D 5 13 1 10											2,08	2,45	2,70	2,93	3,18	3,39	4,08	-10%	-7%	-9%	0%	20%	-14%	-10%						
	N n - o + p P											2,41	2,82	2,78	2,96	2,93	3,23	3,71	-7%	-17%	-33%	-16%	-24%	-13%	-7%						
1999	16 8 15 14 12 13 6 9 7 D 3 15 10											2,17	2,63	2,89	3,02	3,42	3,44	4,13	10%	0%	-19%	-6%	-24%	8%	10%						
	N n - o +p P											2,80	2,74	2,96	3,03	3,25	3,28	3,62	-2%	-16%	-21%	-23%	15%	-32%	-2%						
1998	14 16 12 8 1 3 10 D 9 6 7 5 15 13											2,32	2,57	2,84	3,00	3,30	3,42	4,16	-59%	-56%	-53%	-29%	-45%	-61%	-59%						
	N n - o +p P											2,76	2,93	2,91	3,01	3,11	3,28	3,62	-13%	-11%	10%	-16%	9%	-33%	-13%						

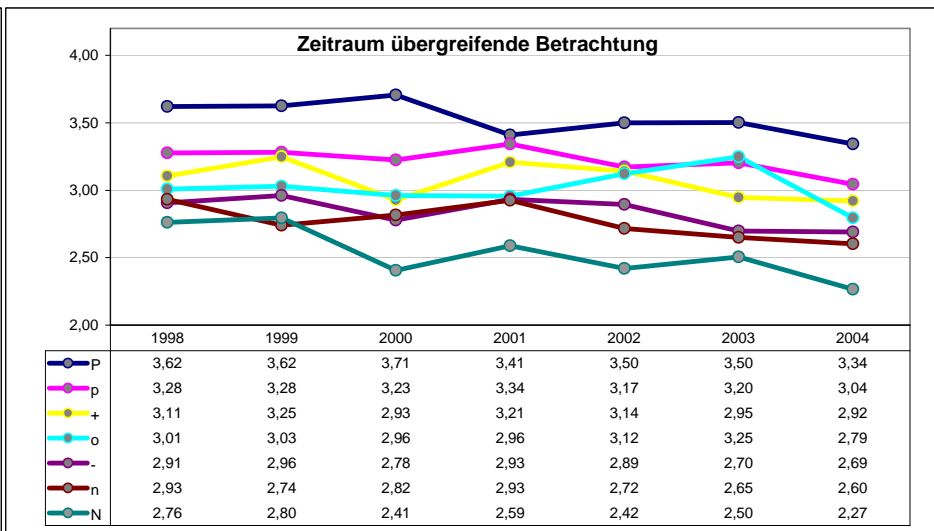
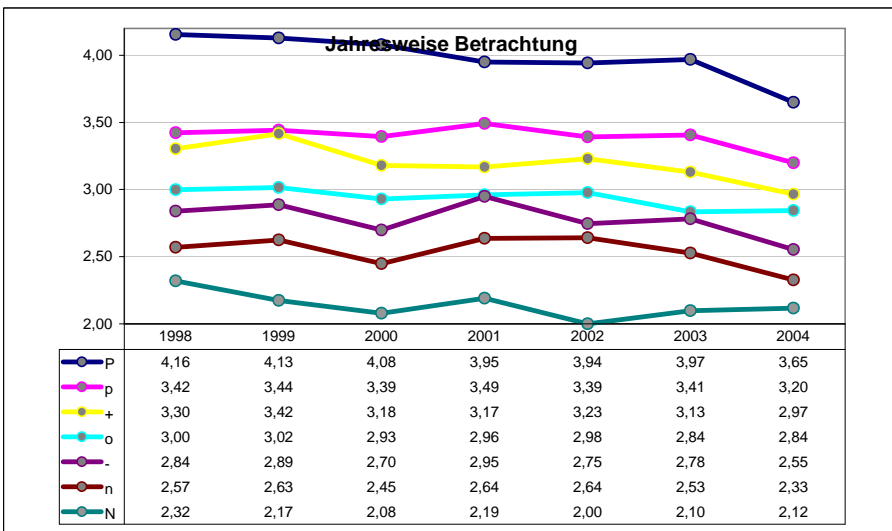
[50\_55]\_w

Average:

Avg:	3,00	2,14	2,54	2,78	2,94	3,20	3,39	3,98
	3,00	2,53	2,77	2,84	3,02	3,07	3,22	3,53

Trends:

Avg:	-1,3%	-1,4%	-1,0%	-1,3%	-0,9%	-1,7%	-0,8%	-1,8%
	-1,3%	-2,9%	-1,6%	-1,3%	-0,1%	-1,1%	-1,0%	-1,3%

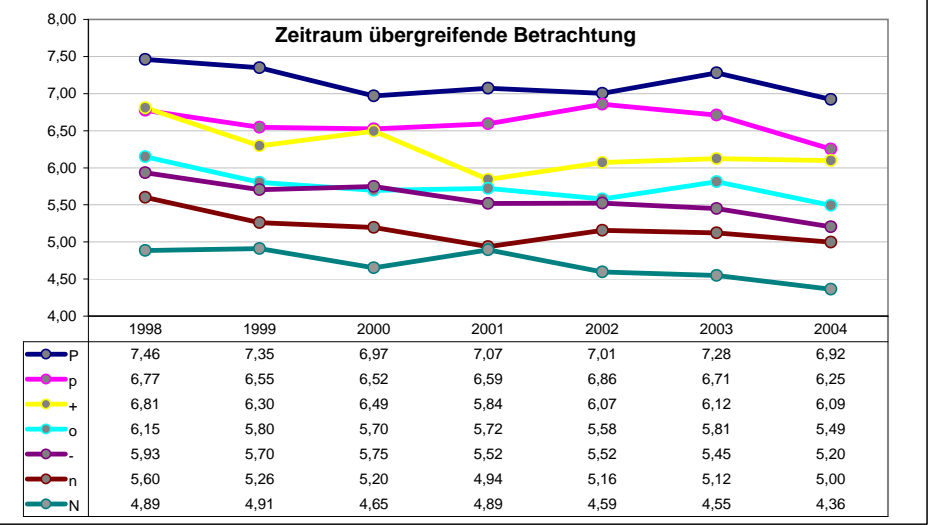
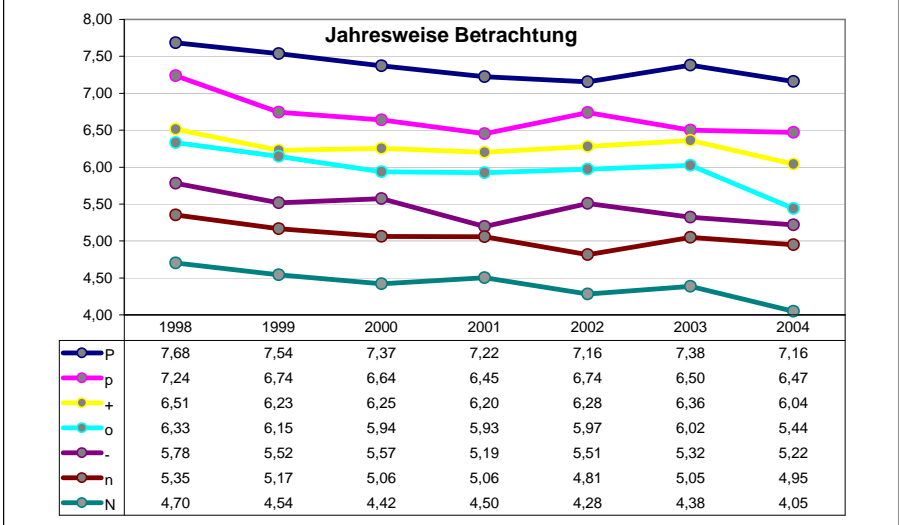


Mittelwerte

2695	5	15	25	35	45	55	65	75	85	95								
3,00	3,85	4,55	4,98	5,28	5,61	5,92	6,31	6,74	7,31	8,37	9,38			5,4	6,9			
	N	n	-	o	+	p	P					N	n	-	o	+	p	P
2004	8	6 9 7	3	5 D 1	16 14	10	12	15 13				4,05	4,95	5,22	5,44	6,04	6,47	7,16
	N	n	-	o	+	p	P					-11%	-18%	-6%	-13%	-2%	-39%	-11%
	N	n-	o	+	p	P						4,36	5,00	5,20	5,49	6,09	6,25	6,92
	N	n	-	o	+	p	P					-45%	-54%	-23%	-32%	-35%	-23%	-45%
2003	8	9 6 7	5 3 D 16	1 10	14	12 15 13						4,38	5,05	5,32	6,02	6,36	6,50	7,38
	N	n	-	o	+	p	P					-28%	-12%	-18%	11%	-21%	-18%	-28%
	N	n	-	o	+	p	P					4,55	5,12	5,45	5,81	6,12	6,71	7,28
	N	n	-	o	+	p	P					-33%	-48%	-39%	-30%	-57%	-33%	-33%
2002	8	7 6	9 1 3 5	D	12 16 14	10	13 15					4,28	4,81	5,51	5,97	6,28	6,74	7,16
	N	n	-	o+	p	P						-14%	-15%	1%	-21%	-8%	-31%	-14%
	N	n	-o	+	p	P						4,59	5,16	5,52	5,58	6,07	6,86	7,01
	N	n	-	o	+	p	P					-54%	-63%	-40%	-32%	-2%	-33%	-54%
2001	8	6	7 1 5 9 D	3 14	16 12	13 15 10						4,50	5,06	5,19	5,93	6,20	6,45	7,22
	N	n-	o	+	p	P						7%	-10%	-13%	5%	-20%	-38%	7%
	Nn	-	o+	p	P							4,89	4,94	5,52	5,72	5,84	6,59	7,07
	N	n	-	o	+	p	P					-25%	-52%	-39%	-28%	-21%	-23%	-25%
2000	8	6	9 3 7 1 5	D 16	10	14 12	15 13					4,42	5,06	5,57	5,94	6,25	6,64	7,37
	N	n	-	o+	p	P						-10%	35%	-26%	-13%	-19%	-27%	-10%
	N	n	-	o-	+	p	P					4,65	5,20	5,75	5,70	6,49	6,52	6,97
	N	n	-	o	+	p	P					-33%	-47%	-38%	-41%	-14%	-28%	-33%
1999	8	7	6	3 9 5 1 D	16 14	12 10	15 13					4,54	5,17	5,52	6,15	6,23	6,74	7,54
	N	n	-	o+	p	P						-5%	-35%	34%	-11%	-23%	-19%	-5%
	N	n	-	o	+	p	P					4,91	5,26	5,70	5,80	6,30	6,55	7,35
	N	n	-	o	+	p	P					-51%	-58%	-38%	-23%	-20%	-10%	-51%
1998	8	6 7 10 9	5 3 D	1	14 16 15	12	13					4,70	5,35	5,78	6,33	6,51	7,24	7,68
	N	n	-	o+	p	P						-61%	-59%	-43%	-11%	-35%	-45%	-61%
	N	n	-	o	+	p	P					4,89	5,60	5,93	6,15	6,81	6,77	7,46
	N	n	-	o	+	p	P					-43%	-23%	-22%	-46%	-21%	-27%	-43%

Average:		Avg:	N	n	-	o	+	p	P	Trends:	
		5,89	4,41	5,06	5,44	5,97	6,27	6,68	7,36	-1,3%	-1,3%
		5,89	4,69	5,18	5,58	5,75	6,25	6,61	7,15	-1,8%	-1,5%



Mittelwerte