

2695	5	15	25	35	45	55	65	75	85	95	
8,89	10,23	11,46	12,42	13,10	13,68	14,31	14,93	15,73	16,86	18,71	22,00

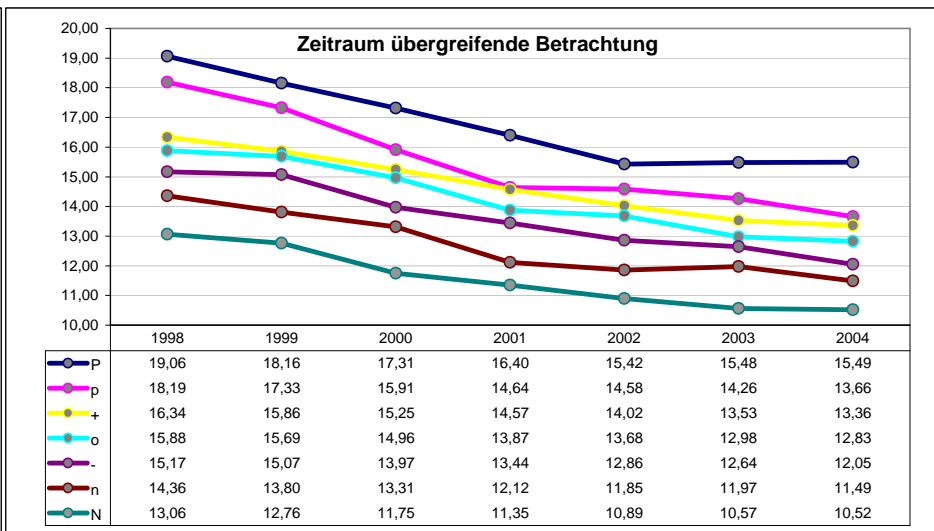
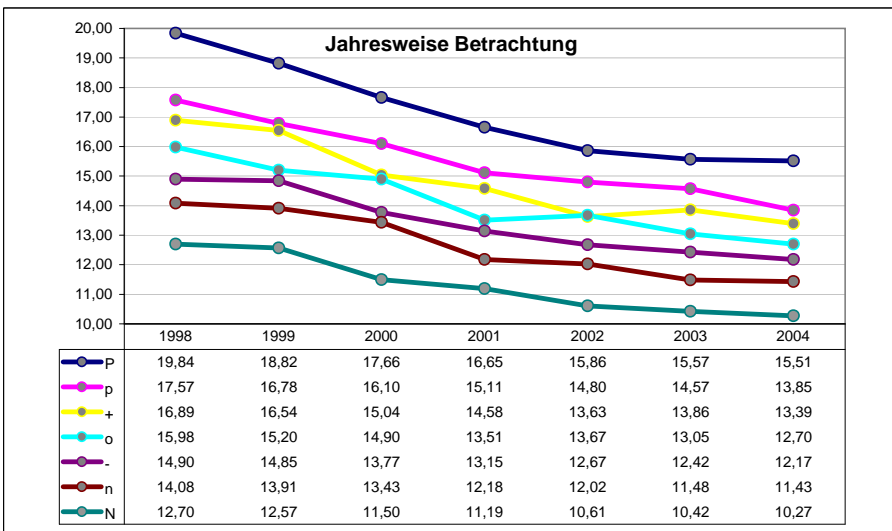
13,1 15,9

												N	n	-	o	+	p	P
2004		8	9 6	7 D 3 14	1 5 12 16			13	10	15		10,27	11,43	12,17	12,70	13,39	13,85	15,51
		Nn	-	o	+			p		P		-34%	-12%	-14%	-2%	-18%	-25%	-34%
		N	n-	o	+p			P				10,52	11,49	12,05	12,83	13,36	13,66	15,49
2003		8	9	6 14 1	7 D 3 5	12 16	15	13	10		10,42	11,48	12,42	13,05	13,86	14,57	15,57	
		Nn	-	o	+			p		P		-25%	-2%	-27%	-45%	-26%	-29%	-25%
		N	n	-o	+			p		P		10,57	11,97	12,64	12,98	13,53	14,26	15,48
2002		8		6 9 1	D 14 7 16	3 5 12		10	13	15		10,61	12,02	12,67	13,67	13,63	14,80	15,86
		N	n	-	+o			p		P		-24%	-30%	-17%	-43%		1%	-24%
		N	n	-	o			p		P		10,89	11,85	12,86	13,68	14,02	14,58	15,42
2001		8	6	9 14	D 3 1 7 16	5	12	15	13	10		11,19	12,18	13,15	13,51	14,58	15,11	16,65
		N	n		-o			+		p		-22%	-17%	-17%	-38%	-14%	-15%	-22%
		N	n		-			o		+p		11,35	12,12	13,44	13,87	14,57	14,64	16,40
2000		8		6 9 14	13 D	7 5	16	10	12	15	13	11,50	13,43	13,77	14,90	15,04	16,10	17,66
		N			n	-		o		+		p		P				
		N			n	-			o+		p		P					
1999				8 9 6		13 D 7	14 5	10	12	15	16	12,57	13,91	14,85	15,20	16,54	16,78	18,82
				N		n	-		o		+p							
				N		n	-		o		+							
1998		8	6 9	1 3	D 7 5	14 16	10	12	15	13	12,70	14,08	14,90	15,98	16,89	17,57	19,84	
					N		n	-		o		+p						
					N		n	-		o+		p						

[60_65]_m

Average:	Avg:	N	n	-	o	+	p	P
	14,15	11,32	12,65	13,42	14,14	14,85	15,54	17,13
	14,16	11,56	12,70	13,60	14,27	14,70	15,51	16,76

Trends:	Avg:	-	o	+	p	P
	-4,0%	-3,9%	-4,0%	-3,8%	-3,9%	-4,2%
	-4,0%	-4,0%	-3,9%	-4,0%	-4,0%	-3,6%
						-4,8%
						-3,8%



Mittelwerte

2695	5	15	25	35	45	55	65	75	85	95	
3,69	4,50	5,20	5,61	5,95	6,21	6,56	6,86	7,26	7,77	8,55	9,89

5,8	7,2
-----	-----

		N	n	-	o	+	p	P
2004	8 14 16 6 13 9 15 12 3 D 7 1 5 10	4,60	5,18	5,50	5,85	6,06	6,65	7,49
	Nn - o + p P	-6%	-9%	-13%	-17%	-18%	-8%	-6%
	N n- o + p P	5,13	5,31	5,60	5,87	6,14	6,44	6,88
	Nn - o+ p P	5%	-33%	-13%	-43%	-39%	-18%	5%
2003	8 14 9 16 7 6 3 15 D 12 13 1 5 10	4,74	5,26	5,56	6,00	6,28	6,60	7,63
	N n- o + p P	-16%	-7%	-16%	-4%	-5%	-1%	-16%
	Nn - o+ p P	5,22	5,47	5,62	6,06	6,12	6,56	7,07
	Nn - o+ p P	-16%	-41%	-37%	-31%	-17%	-18%	-16%
2002	8 14 12 16 9 7 3 13 6 D 1 15 5 10	4,79	5,47	5,91	6,04	6,62	6,81	7,38
	N n - o +p P	10%	-23%	1%	-26%	12%	-19%	10%
	N n o- +p P	5,13	5,81	6,13	6,06	6,41	6,53	6,96
	N n o- +p P	-27%	-14%	-35%	-34%	-15%	-17%	-27%
2001	8 14 9 12 D 6 3 13 16 7 1 15 5 10	4,95	5,72	5,90	6,27	6,53	6,97	7,71
	N n- o+ p P	7%	-22%	-37%	-19%	-36%	1%	7%
	N n - o+ p P	5,49	5,78	6,13	6,23	6,50	6,62	7,30
	N n - o+ p P	-44%	-23%	-42%	-7%	-29%	-3%	-44%
2000	8 9 14 6 16 D 7 13 13 12 15 5 10	5,27	5,81	6,50	6,55	7,17	7,45	8,32
	N n -o + p P	-9%	-36%	-27%	-7%	-40%	-3%	-9%
	N n - o + p P	5,58	6,21	6,24	6,80	7,00	7,28	7,96
	N n - o + p P	-40%	-45%	-38%	-39%	-18%	-26%	-40%
1999	8 9 6 14 3 D 7 1 12 5 10 16 13 15	5,60	6,14	6,48	7,13	7,25	8,06	8,56
	N n - o+ p P	-1%	-16%	-21%	-12%	-18%	-24%	-1%
	N n -n o+ p P	6,02	6,74	6,70	6,92	7,23	7,59	8,03
	N n -n o+ p P	-40%	-8%	-31%	6%	-13%	-37%	-40%
1998	8 6 9 3 D 7 14 5 1 10 16 13 12 15	5,59	6,23	6,64	6,98	7,36	8,16	8,86
	N n - o + p P	-79%	-67%	-58%	-55%	-79%	-56%	-79%
	Nn - o+ pP	6,29	6,39	6,77	6,94	7,24	7,78	8,46
	Nn - o+ pP	-46%	-35%	-31%	-27%	-30%	-18%	-46%

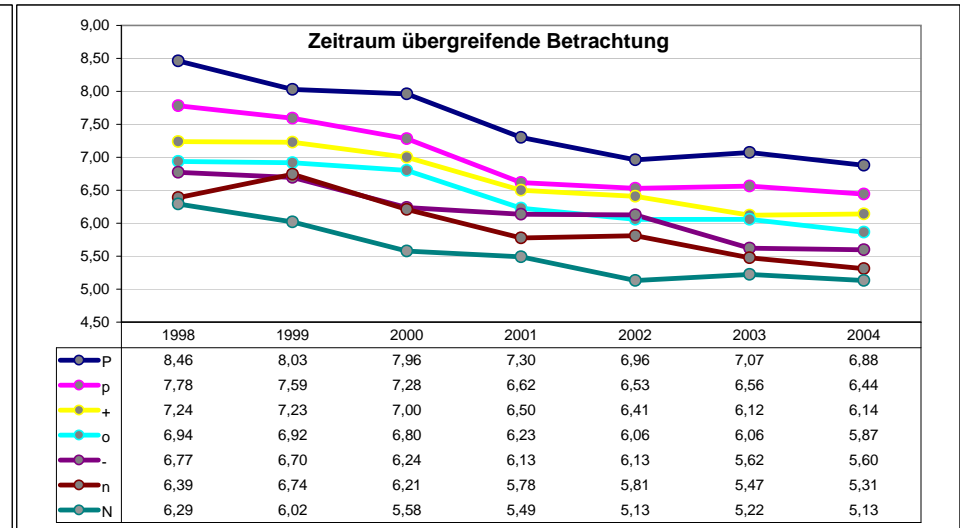
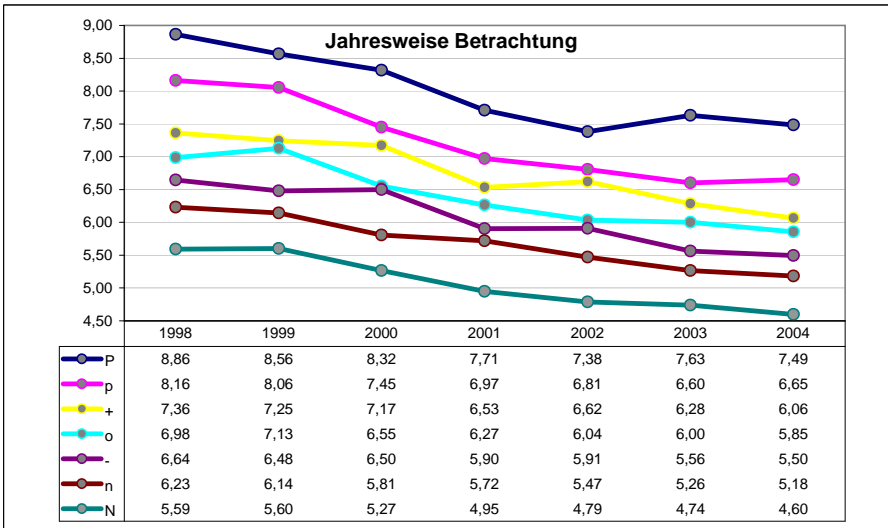
[60_65] w

Average:

Avg:	N	n	-	o	+	p	P
6,46	5,08	5,69	6,07	6,40	6,75	7,24	7,99
6,46	5,55	5,96	6,17	6,41	6,66	6,97	7,52

Trends:

Avg:	-	o	+	p	P
-3,5%	-3,7%	-3,3%	-3,5%	-3,4%	-3,4%
-3,5%	-3,6%	-3,7%	-3,3%	-3,2%	-3,3%
	-4,0%	-3,1%	-2,7%	-3,0%	-3,1%



Mittelwerte