

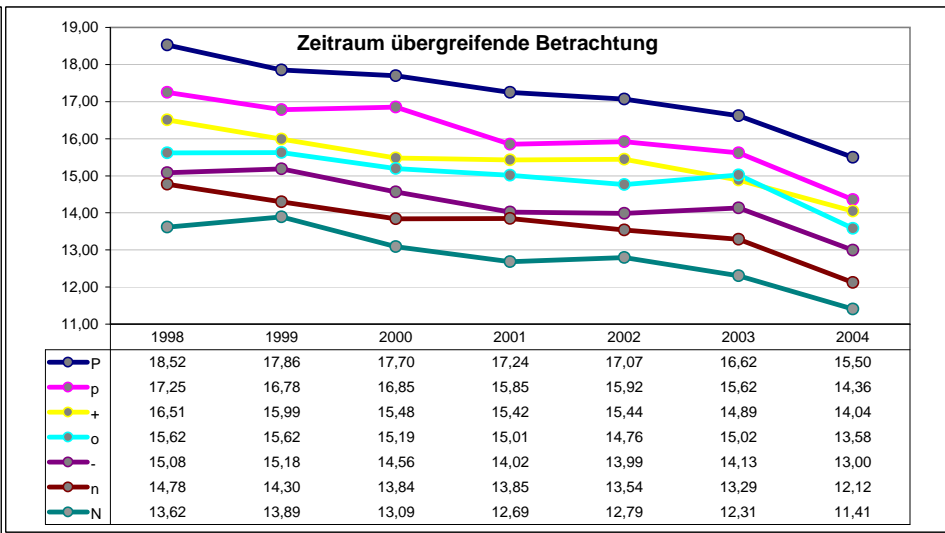
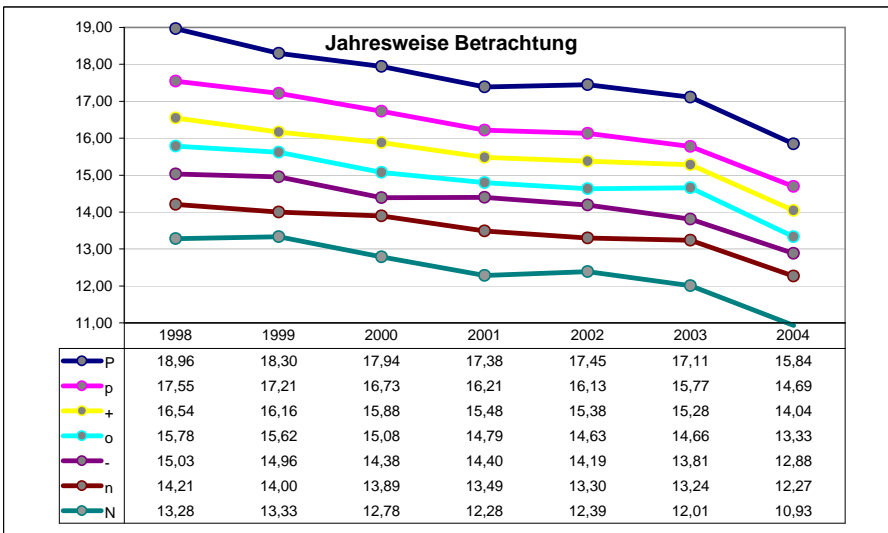
2695	5	15	25	35	45	55	65	75	85	95	
9,87	11,72	12,79	13,46	14,06	14,61	15,11	15,60	16,33	17,12	18,36	20,18

	N	n	-	o	+	p	P
2004	10,93	12,27	12,88	13,33	14,04	14,69	15,84
	-52%	-29%	-28%	-46%	-32%	-31%	-52%
	11,41	12,12	13,00	13,58	14,04	14,36	15,50
	-43%	-56%	-71%	-50%	-52%	-59%	-43%
2003	12,01	13,24	13,81	14,66	15,28	15,77	17,11
	-39%	-14%	-49%	-37%	-12%	-38%	-39%
	12,31	13,29	14,13	15,02	14,89	15,62	16,62
	-64%	-54%	-51%	-48%	-53%	-37%	-64%
2002	12,39	13,30	14,19	14,63	15,38	16,13	17,45
	-31%	-53%	-47%	-32%	-34%	-47%	-31%
	12,79	13,54	13,99	14,76	15,44	15,92	17,07
	-61%	-55%	-70%	-38%	-51%	-62%	-61%
2001	12,28	13,49	14,40	14,79	15,48	16,21	17,38
	-45%	-36%	-40%	-47%	-41%	-45%	
	12,69	13,85	14,02	15,01	15,42	15,85	17,24
	-62%	-40%	-66%	-64%	-54%	-54%	-62%
2000	12,78	13,89	14,38	15,08	15,88	16,73	17,94
	-44%	-32%	-37%	-52%	-44%	-50%	-44%
	13,09	13,84	14,56	15,19	15,48	16,85	17,70
	-62%	-70%	-58%	-43%	-61%	-49%	-62%
1999	13,33	14,00	14,96	15,62	16,16	17,21	18,30
	-39%	-59%	-40%	-38%	-38%	-51%	-39%
	13,89	14,30	15,18	15,62	15,99	16,78	17,86
	-60%	-59%	-17%	-45%	-42%	-35%	-60%
1998	13,28	14,21	15,03	15,78	16,54	17,55	18,96
	-80%	-76%	-75%	-72%	-81%	-81%	-80%
	13,62	14,78	15,08	15,62	16,51	17,25	18,52
	-59%	-40%	-56%	-52%	-51%	-61%	-59%

[65_75]_w

Average:	Avg:	N	n	-	o	+	p	P
	14,92	12,43	13,48	14,24	14,84	15,54	16,33	17,57
	14,92	12,83	13,67	14,28	14,97	15,40	16,09	17,22

Trends:	Avg:	-2,4%	-2,9%	-2,1%	-2,2%	-2,3%	-2,2%	-2,6%	-2,5%
	-2,4%	-2,8%	-2,7%	-2,2%	-1,8%	-2,2%	-2,7%	-2,5%	



Mittelwerte

