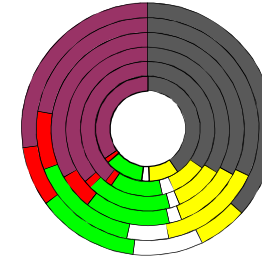


Aachen, krfr. Stadt

2015
245.885
>90
85-89
80-84
75-79
70-74
65-69
60-64
55-59
50-54
45-49
40-44
35-39
30-34
25-29
20-24
15-19
10-14
5-9
0-4

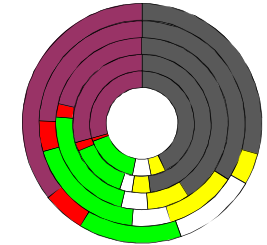


Bundestagswahlergebnisse 1994, 1998, 2002, 2005, 2009, 2013

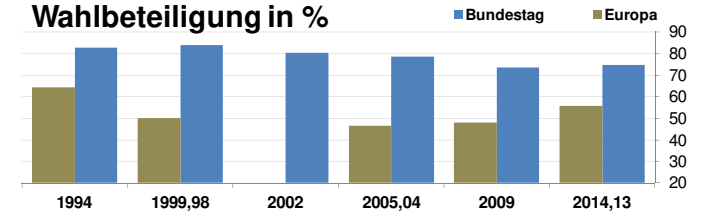


- CDU/CSU
- FDP
- Sonstige
- Grüne
- PDS
- SPD

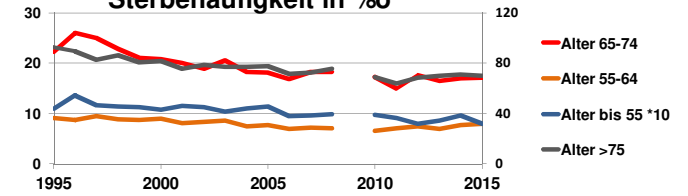
Europawahlergebnisse 1994, 1999, 2004, 2009, 2014



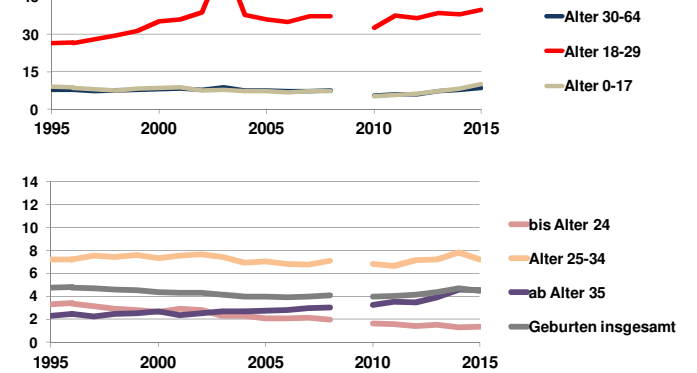
Wahlbeteiligung in %



Sterbehäufigkeit in %



Wanderungsbewegungen in % des Alters



<http://www.rankingweb.de/stadt.html>