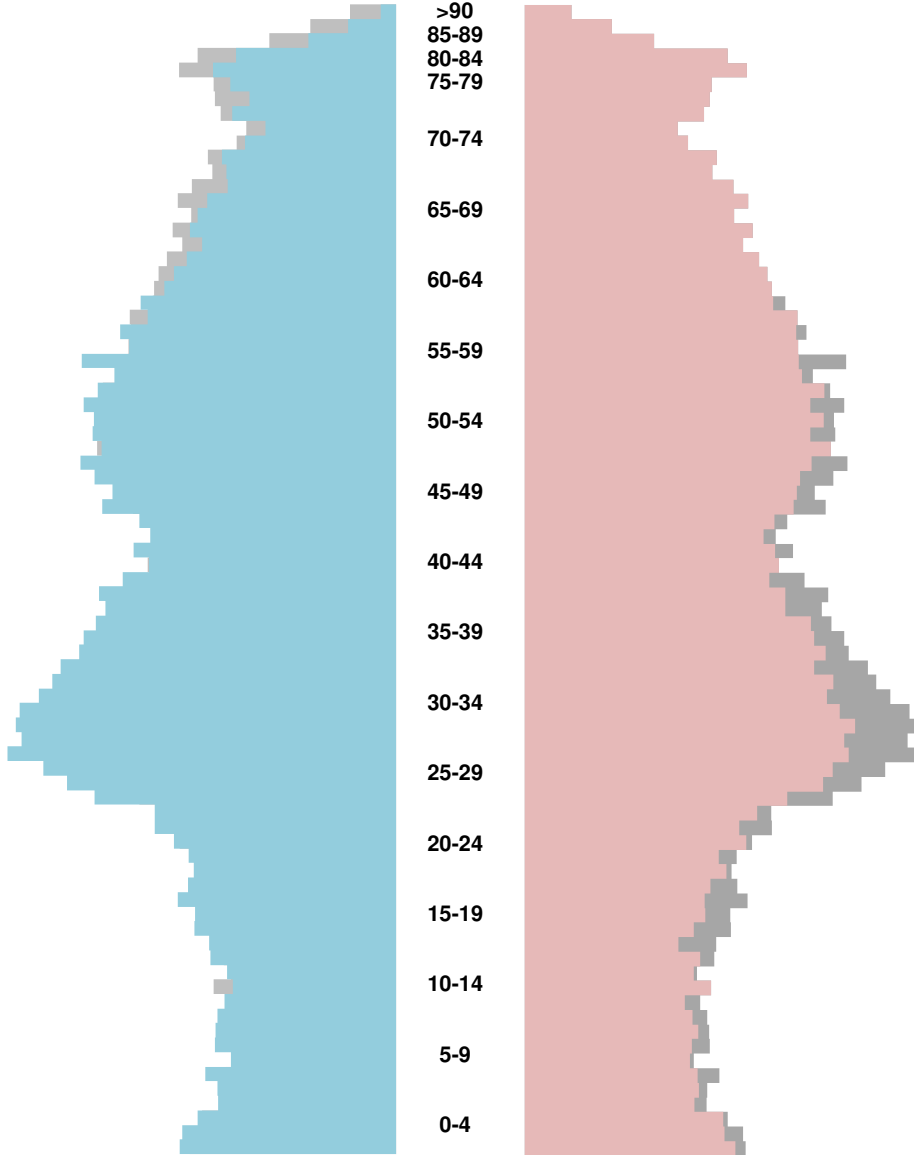
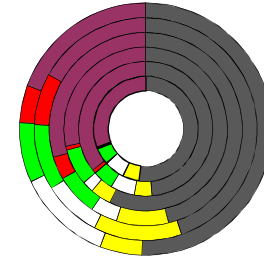


Ingolstadt

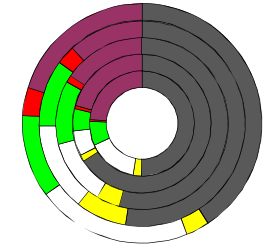
2015
132.438
>90
85-89
80-84
75-79
70-74
65-69
60-64
55-59
50-54
45-49
40-44
35-39
30-34
25-29
20-24
15-19
10-14
5-9
0-4



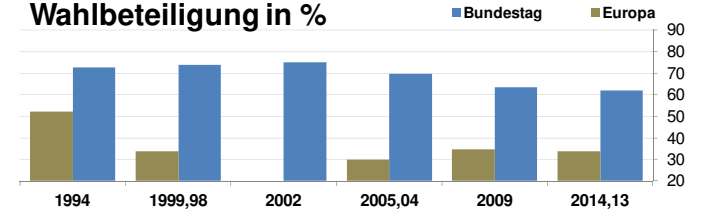
Bundestagswahlergebnisse 1994, 1998, 2002, 2005, 2009, 2013



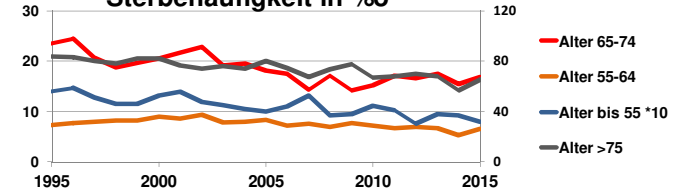
Europawahlergebnisse 1994, 1999, 2004, 2009, 2014



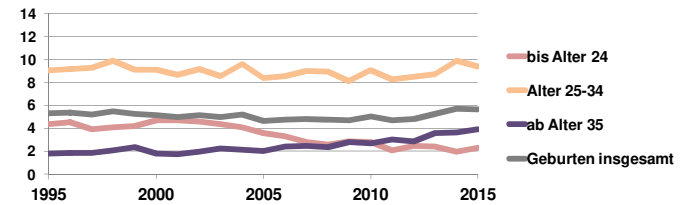
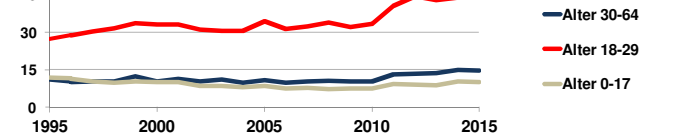
Wahlbeteiligung in %



Sterbehäufigkeit in %



Wanderungsbewegungen in % des Alters



<http://www.rankingweb.de/stadt.html>