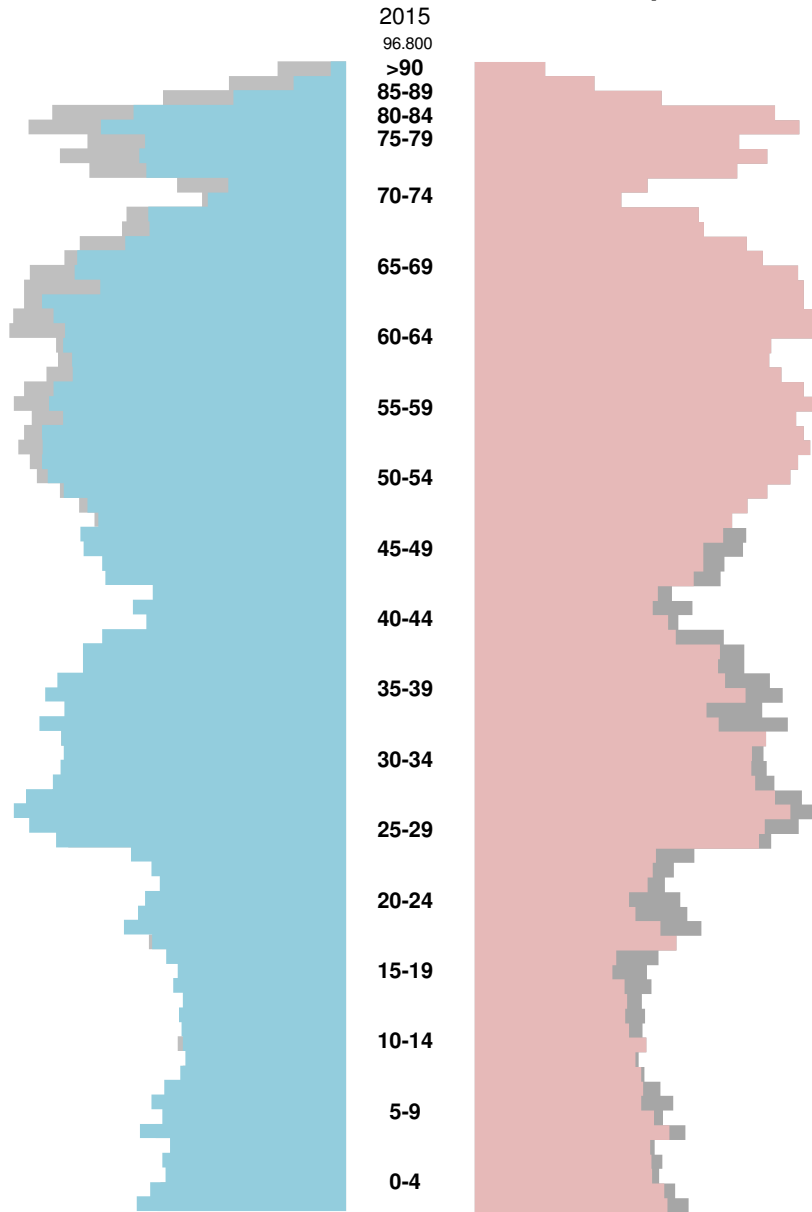
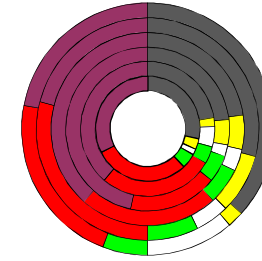


# Kreisfreie Stadt Schwerin, Landeshauptstadt

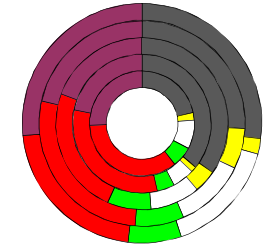


## Bundestagswahlergebnisse 1994, 1998, 2002, 2005, 2009, 2013

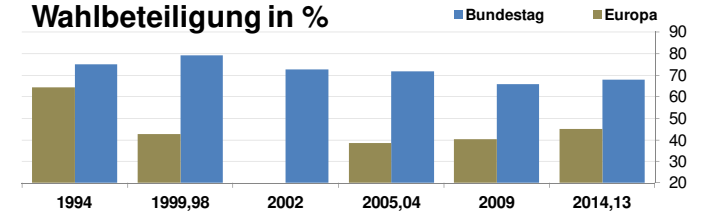


- CDU/CSU
- FDP
- Sonstige
- Grüne
- PDS
- SPD

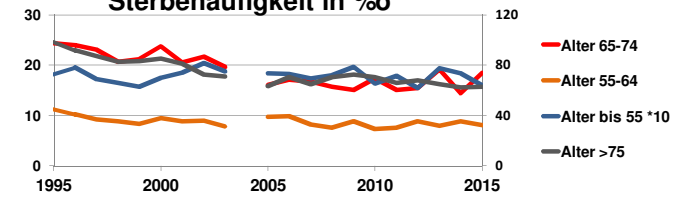
## Europawahlergebnisse 1994, 1999, 2004, 2009, 2014



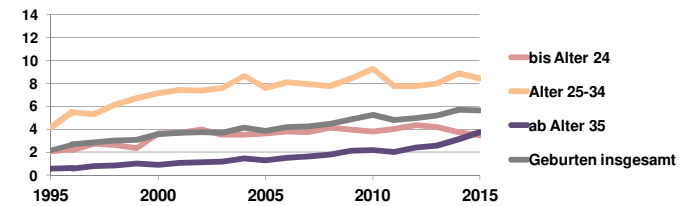
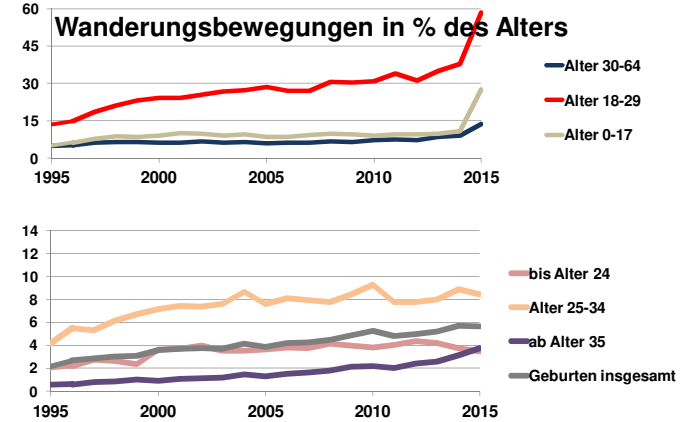
## Wahlbeteiligung in %



## Sterbehäufigkeit in %



## Wanderungsbewegungen in % des Alters



<http://www.rankingweb.de/stadt.html>