

Würzburg

2015
124.873
>90
85-89
80-84
75-79

70-74

65-69

60-64

55-59

50-54

45-49

40-44

35-39

30-34

25-29

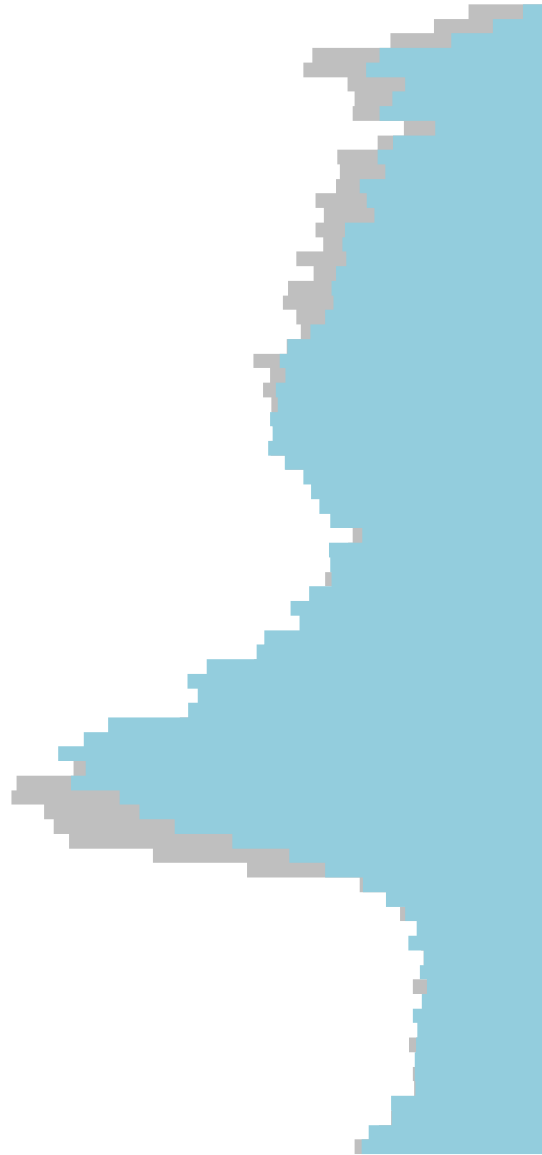
20-24

15-19

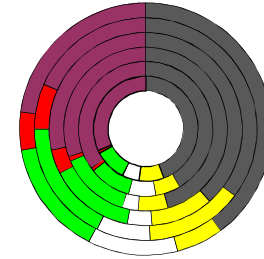
10-14

5-9

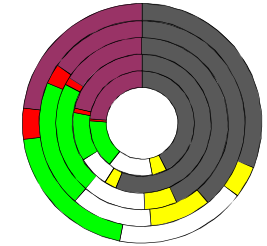
0-4



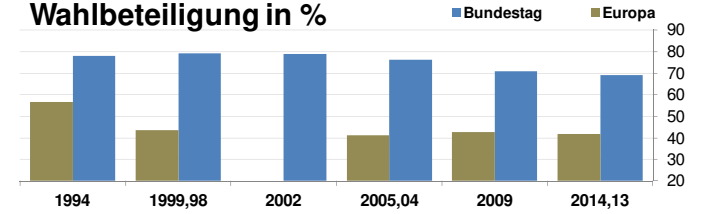
Bundestagswahlergebnisse
1994, 1998, 2002, 2005, 2009, 2013



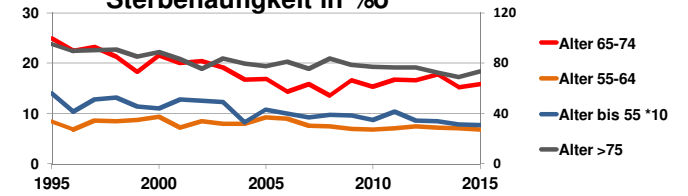
Europawahlergebnisse
1994, 1999, 2004, 2009, 2014



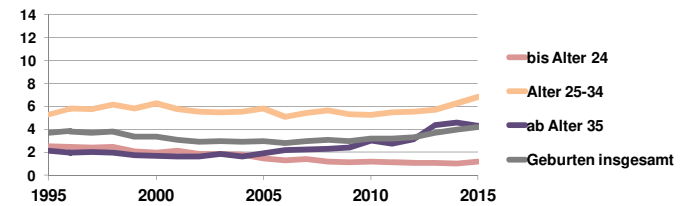
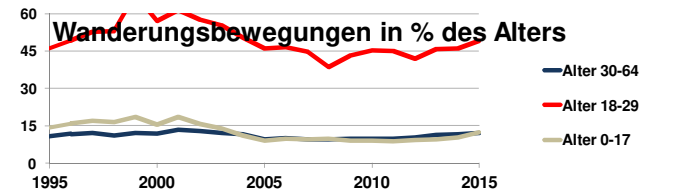
Wahlbeteiligung in %



Sterbehäufigkeit in %



Wanderungsbewegungen in % des Alters



<http://www.rankingweb.de/stadt.html>